



PARTS CATALOG PROHEAT X30

S/N X3H18017001 AND ABOVE (SINGLE FUEL LINE MODELS)

PROHEAT

TABLE OF CONTENTS

A. SAFETY	A-1
B. SELECTION GUIDE	B-1
BURNERHEAD ASSEMBLY	1
COMPRESSOR	2
FUEL PUMP	3
FAN END AND BLOWER	4
FAN END ELECTRICAL	5
HEAT EXCHANGER ASSEMBLY	6, 7
COOLANT PUMP	8
PCM	9
ELECTRICAL	10
STANDARD INSTALLATION KIT	11
ELECTRICAL OPTIONS	12
PLUMBING OPTIONS	13
ENCLOSURE	14
EXHAUST OPTIONS	15
AIR INTAKE OPTIONS	16
MOUNTING OPTIONS	17, 18
PROHEAT CAN DEVICES	19
TIMER	20
AUX HEATER AND THERMOSTAT	21
DOCUMENTATION	22
NUMERIC PARTS INDEX	23

Note: *This page left blank intentionally.*

A. SAFETY

Throughout this manual, you will see notes labeled **DANGER**, **WARNING**, **CAUTION**, and **NOTICE** to alert you to special instructions or precautions concerning a particular procedure that would be hazardous if performed incorrectly or carelessly.

Observe them carefully!

These safety alerts alone cannot eliminate all hazards. Strict compliance with these special instructions and common sense are major accident prevention measures.

⚠ DANGER

Immediate hazards that will result in severe injury or death.

⚠ WARNING

Hazards or unsafe practices that could result in severe personal injury or death.

⚠ CAUTION

Hazards or unsafe practices that could result in minor injury or product or property damage.

NOTICE

Information that is important to proper installation or maintenance, but is not hazard-related.

SAFETY CONSIDERATIONS

▲ WARNING

Exhaust

Inhalation of exhaust gas (containing carbon monoxide) may cause severe personal injury and/or death. Anyone suspected of suffering from CO inhalation should be removed from the hazardous area and given medical assistance immediately.

▲ WARNING

Explosion Hazard

Do not operate heater where combustible fumes or airborne particles, such as sawdust, are present.

▲ WARNING

Fuel

Exercise extreme caution when working near fuel or fuel-filled equipment. Do not operate heater during fueling operations. In addition, do not smoke or handle open flame equipment, such as a blowtorch, around fuel.

▲ WARNING

Fire Hazard

Do not place any flammable items around the heater and exhaust pipe.

▲ WARNING

Batteries

Wear hand and eye protection when working near batteries. Do not smoke or use open flames near batteries.

▲ WARNING

Electrical

Electric shock can cause severe personal injury, burns, and death. Before working on any unit, disconnect the batteries. Use only approved materials and methods when working on the electrical system and follow local electrical codes. Never work with electricity in wet conditions or when you are feeling fatigued.

▲ WARNING

Poisons/Toxins

Fuel and coolant are toxic and in some cases, carcinogenic. Wear eye and hand protection at all times. Remove contaminated clothing immediately and wash contaminated skin. Do not breathe in vapors.

▲ WARNING

Moving/Hot Parts

Moving parts can cause severe injury and or death. Before working on any unit, shut it off. Do not operate any unit until protective covers have been replaced. Always ensure bolts and clamps are correctly torqued and secured. Inspect mechanical components periodically for damage and corrosion.

▲ WARNING

Coolant

Never remove the filler cap when the engine is hot – escaping steam or scalding water could cause serious personal injury. The coolant level in the expansion tank should be checked at least weekly (more frequently in high mileage or arduous conditions). Always check the level *when the system is cold*. Unscrew the filler cap slowly, allowing the pressure to escape before removing completely. *Never* run the engine without coolant.

Prevent anti-freeze coming in contact with the skin or eyes. If this occurs, rinse immediately with plenty of water. Anti-freeze will damage painted surfaces.

Never top-up with salt water. Even when travelling in territories where the water supply contains salt, always ensure you carry a supply of fresh (rain or distilled) water.

▲ DANGER

California Proposition 65 Warning

Do not operate heater in garages or in other closed or unventilated areas.

Diesel exhaust and some of its constituents are known to the State of California to cause cancer, birth defects, and other reproductive harm.

Electrical components in this product may contain lead, a chemical known to the State of California to cause cancer and birth defects and other reproductive harm.

B. SELECTION GUIDE

Heat output 10,000 to 31,000 BTU/hr (2.9 to 9.1 kW/hr)



This selection guide is designed to help you choose the appropriate PROHEAT kit for your application.

For further information, visit our web site at www.proheat.com

Standard Heater Kit For Engine Heat

PH0350	Basic Heater	
PH0360	Standard Heater Kit – No Enclosure	
	Kits Contain:	
	Basic Heater	PH0350
	Installation kit.	PK3014
PH0370	Standard Heater Kit – With Enclosure	
	Kits Contain:	
	Basic Heater	PH0350
	Installation kit.	PK3014
	Aluminum Enclosure	PK3002
PH0380	School Bus Heater Kit – With Install Kit, Enclosure and Impact Switch	
PK0383	School Bus Heater Kit – With Extended Harness Install Kit (50')	PK3050

Installation Kits

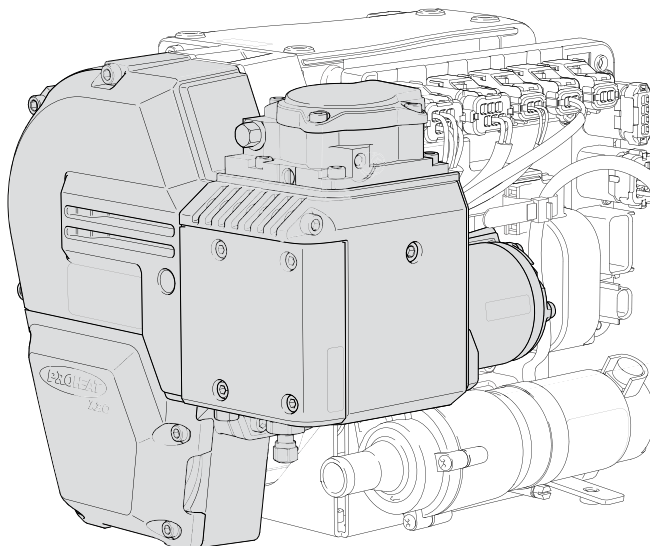
PK3014	12/24 Volt Installation Kit	
	Installation Kit Contains:	
	Power Harness	149328K
	Switch/Control Harness.	149327K
	Switch, Rocker 10–30 Volt	920130K
	15A Fuse	978888K
	Fuel Pick Up	149498K
	Fuel Line.	149690K
	Exhaust Pipe	149359K
	Exhaust Clamp	149366K
PK3018	12 Volt School Bus Installation Kit	
	Installation Kit Contains:	
	Power Harness, 16'	149328K
	Switch/Control Harness 25'	149327K
	Switch 12 Volt	920125K
	15A Fuse	978888K
	Fuel Pick Up	149498K
	Fuel Tank Bushing.	149497K
	Fuel Line 40'	149490K
	Exhaust Pipe	149359K
	Exhaust Clamp	149366K
PK3050	School Bus Extended Harness Install Kit (50')	

Options

PK3000	Proheat Function Controller
PK3001	Thermostat, Bunk Fan CAN bus
PK3002	Aluminum Enclosure Plain
PK3004	Bunk Heater Kit 24V
PK3005	Universal Mount Kit
PK3006	Cross Frame Kit
PK3007	Snorkel Kit, 5'
PK3008	Extended Exhaust Kit, 5'
PK3009	Spark Arrestor Kit
PK3010	Coolant Hose Kit, 180° – 3/4"
PK3011	Rubber Mount Kit
PK3012	Bunk Heater Kit 12V
PK3016	No Drill Mount Kit
PK3013	Hose Kit, 90° Elbow, 3/4" (2/pkg)
149480K	Switch/Control Harness, 50'
149472K	Power Harness, 50'
149490K	Fuel Line, 40'

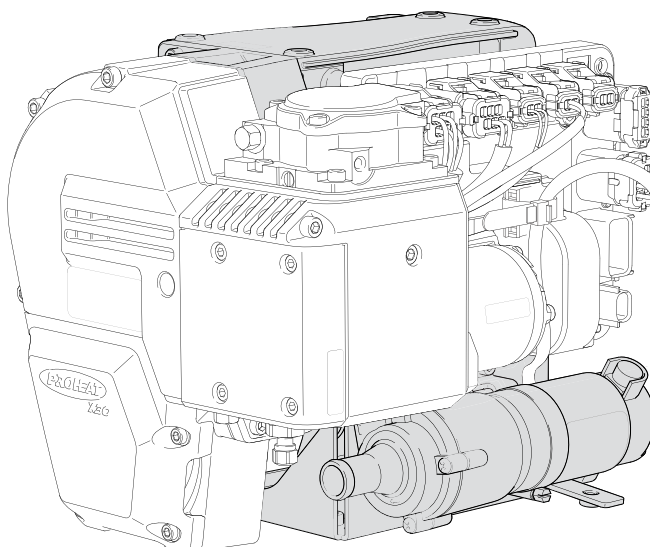
Burnerhead Assembly

(See page 1)

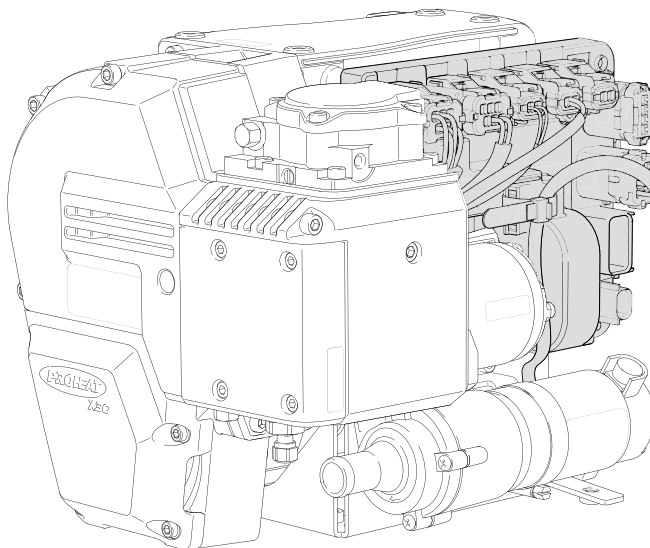


Heat Exchanger Assembly

(See page 6)



PCM (See page 9)



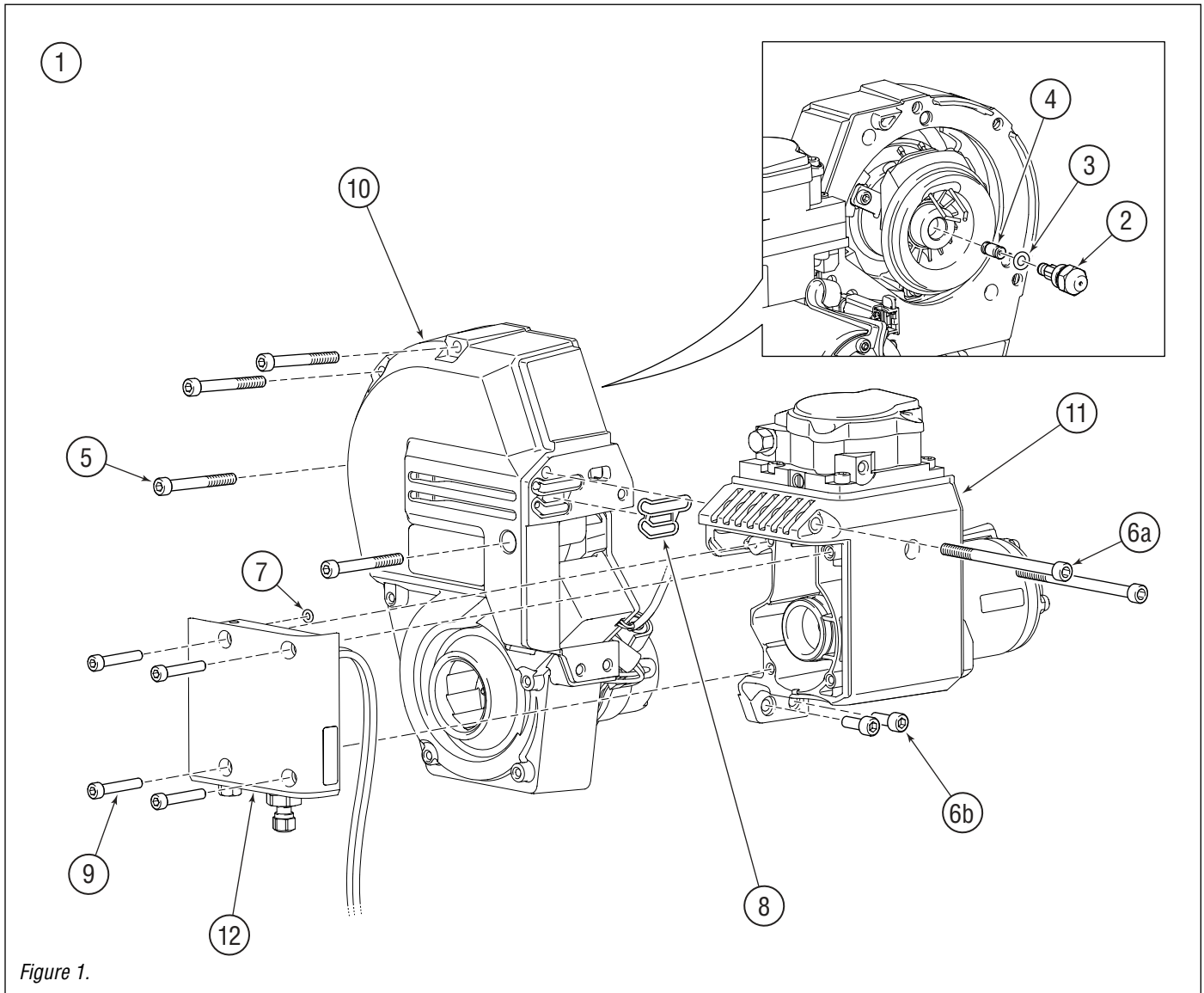


Figure 1.

ITEM	PART#	DESCRIPTION
1	149711K	Assembly, Burnerhead
2	149426K	Nozzle, 30609-32X Fuel c/w O-Ring Note: Always check part # on nozzle to ensure correct replacement part.
3	221443K	O-Ring, 0.007, 75 DUR
4	149424K	Seal, Nozzle Insert
5	850360K	Screw, M6 x 1 x 65 ZP (4/pkg)
6	850232K	Kit, Compressor Fastener Inc. 2 x item 6a and 2 x 6b
7	See page 3	O-Ring, Fuel Pump
8	See page 2	Seal, Compressor to Fan End
9	207001K	Kit, Fuel Pump Fastener M5 x 0.8 x 30 ZP (4/pkg)

ITEM	PART#	DESCRIPTION
10	See page 4	Fan End
11	See page 2	Compressor
12	See page 3	Fuel Pump

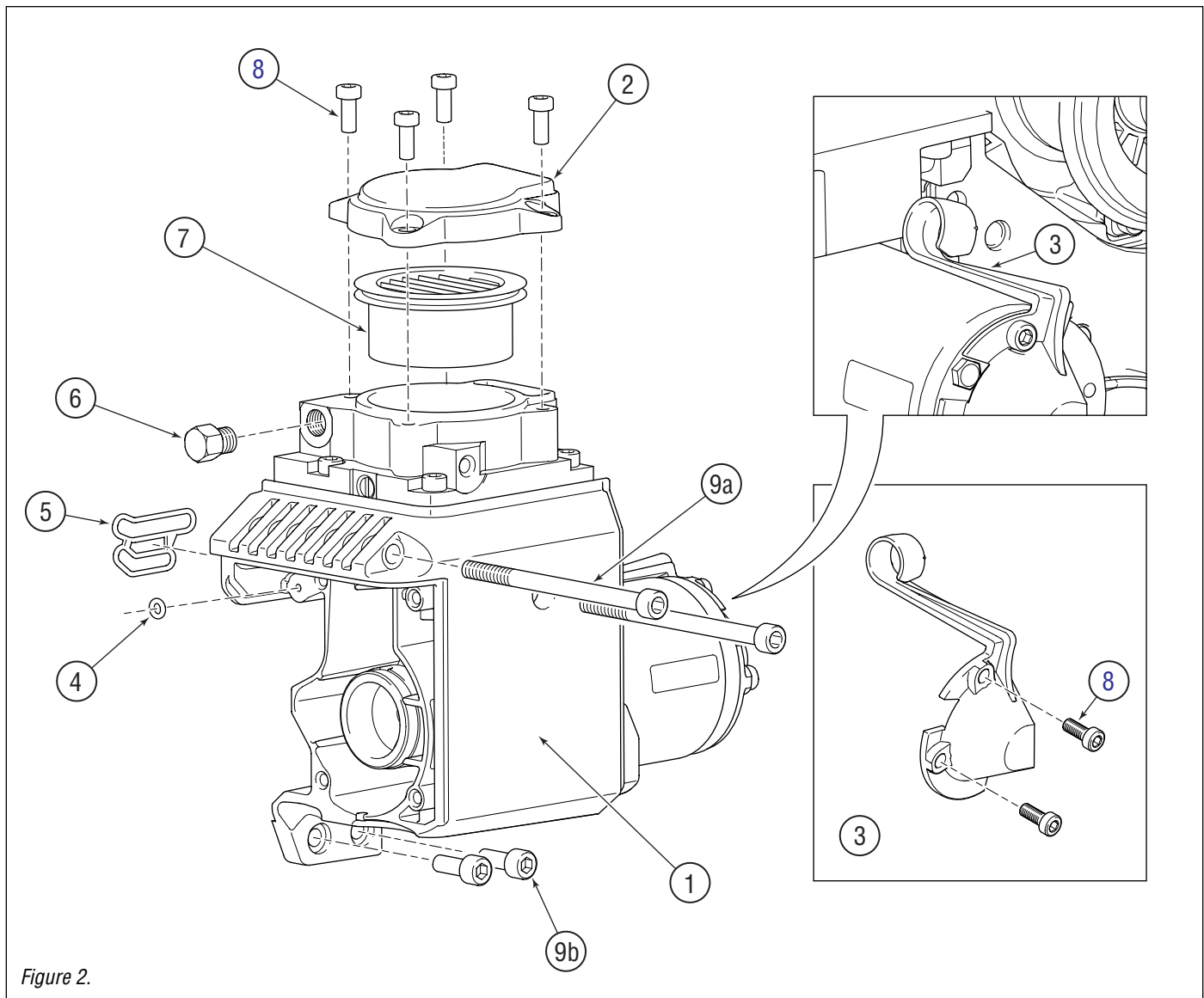


Figure 2.

ITEM	PART#	DESCRIPTION
1	149309K	Assembly, Compressor <i>c/w items 2 through 10</i>
2	149324K	Kit, Air Filter Cover, <i>c/w screws item 8</i>
3	149312K	Wire Clip, Compressor, <i>c/w screws item 8</i>
4	See page 3	O-Ring
5	149329K	Seal, Compressor to Fan End
6	829325K	Plug, Compressor, Test Port
7	953420K	Element, Air Filter
8	207012K	Screw, M5 x 0.8 x 12 ZP (4/pkg)
9	850232K	Kit, Compressor Fastener <i>c/w 2 x item 9a and 2 x 9b</i>

ITEM	PART#	DESCRIPTION
10	207001K	Kit, Fuel Pump Fastener (<i>Not Shown</i>) M5 x 0.8 x 30 ZP (4/pkg)

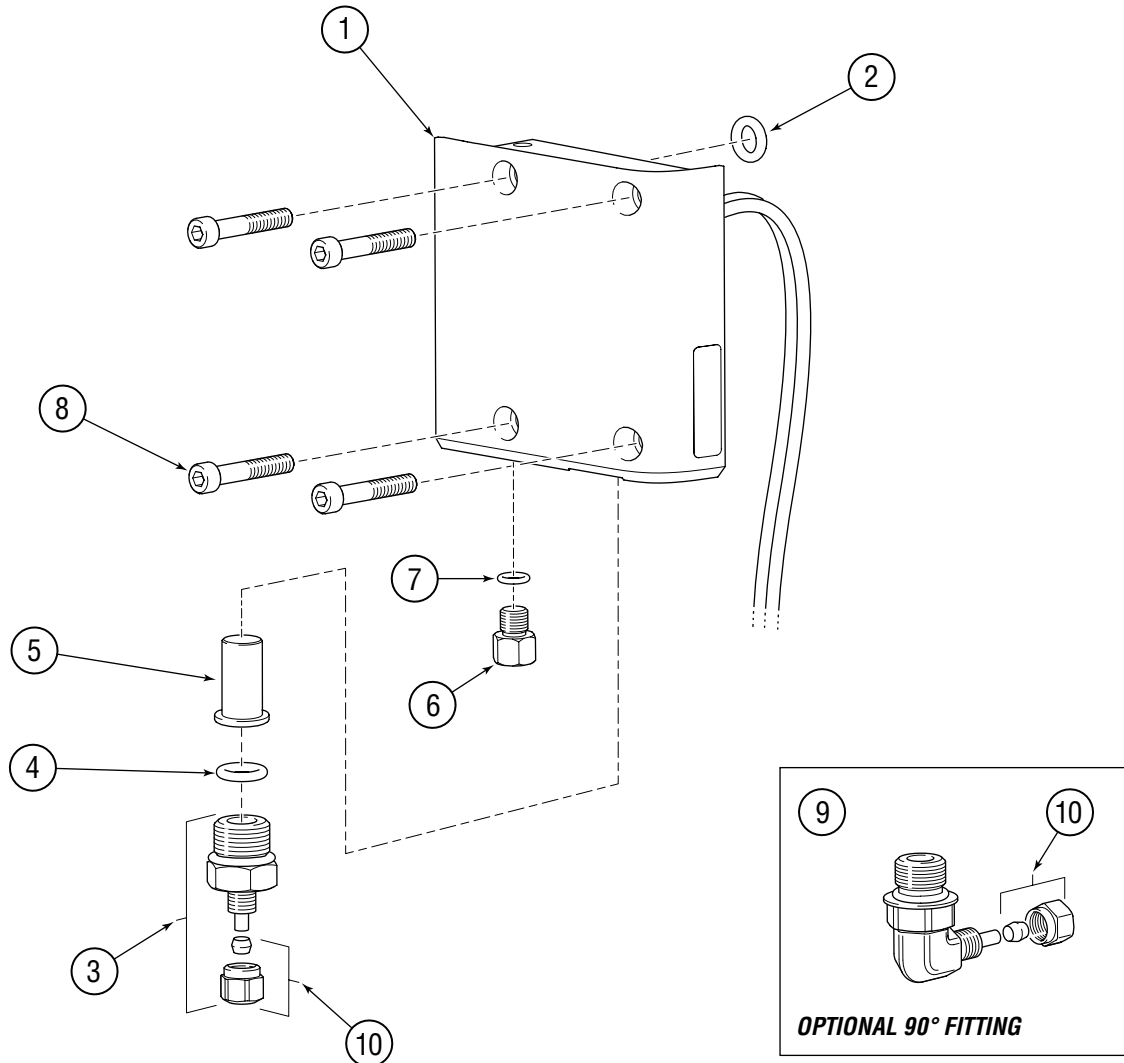


Figure 3.

ITEM	PART#	DESCRIPTION
1	149160K	Fuel Pump Assembly, c/w O-Rings, Fuel Fittings and Fuel valve (items 2 through 7, 9 and 10)
2	221443K	O-Ring, 0.007, 75 DUR (2/pkg)
3	149482K	Kit, Fitting, Fuel, Straight -6 ORB 3/16 Tube, c/w item 9
4	149093K	O-Ring, 2-202 (2/pkg)
5	149481K	Screen, Fuel, c/w O-Ring item 4
6	829325K	Hex Plug, c/w O-Ring item 7
7	149120K	O-Ring, 0.902, 75 DUR (2/pkg)
8	207001K	Kit, Fuel Pump Fastener M5 x 0.8 x 30 ZP (4/pkg)

ITEM	PART#	DESCRIPTION
9	149675K	Kit, Fitting, Elbow -6 ORB 3/16 Tube, c/w item 10
10	149506K	Kit, Hardware, 3/16 Fuel Fitting, c/w sleeve and nut

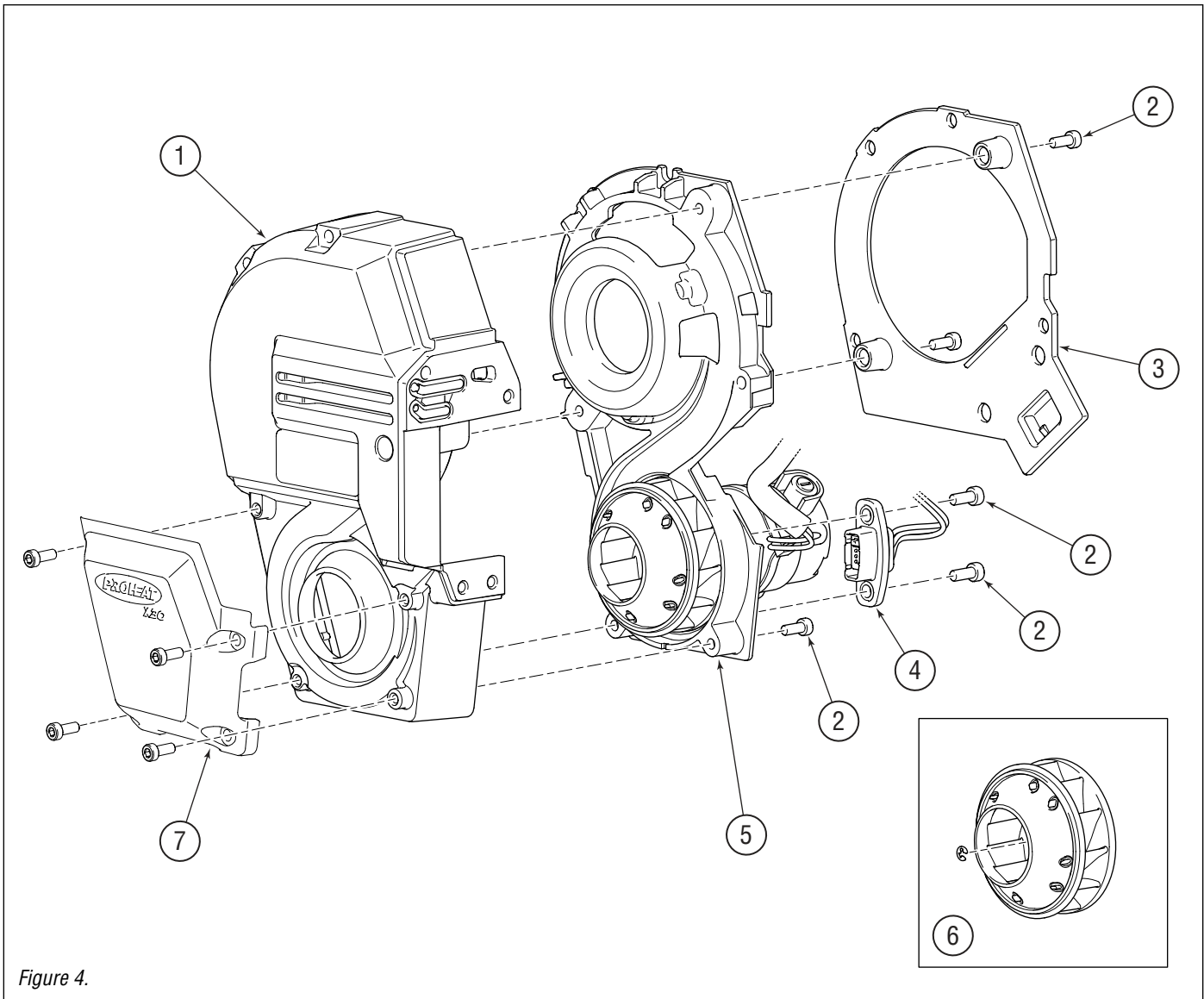


Figure 4.

ITEM	PART#	DESCRIPTION
1	149713K	Casting, Fan End
2	207512K	Screw, M5 x 0.8 x 12 ZP, Low Profile (12/pkg)
3	149339K	Spacer, Thermal Break
4	149345K	Blower Speed Sensor, c/w screws
5	149931K	Blower Assembly c/w speed sensor item 4 and fan blade item 6
6	149333K	Fan Blade, Capped
7	See page 16	Cover, Splash Guard

ITEM	PART#	DESCRIPTION
------	-------	-------------

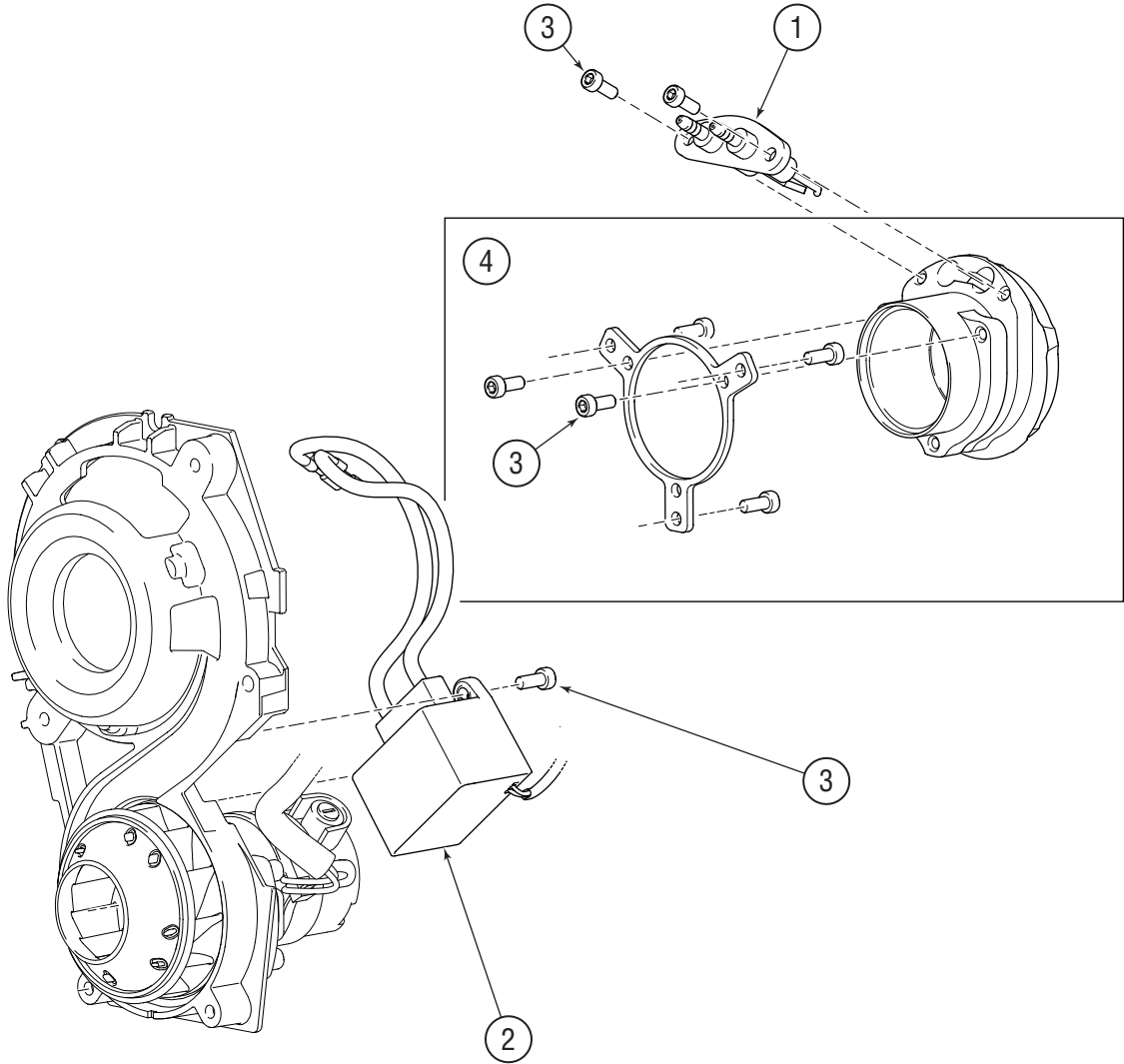


Figure 5.

ITEM	PART#	DESCRIPTION
1	149456K	Electrode, Ignition <i>c/w screws item 3</i>
2	149450K	Module, Ignition <i>c/w screws item 3</i>
3	207512K	Screw, M5 x 0.8 x 12 ZP, Low Profile (12/pkg)
4	149153K	Assembly, Diffuser Cone

ITEM	PART#	DESCRIPTION
------	-------	-------------

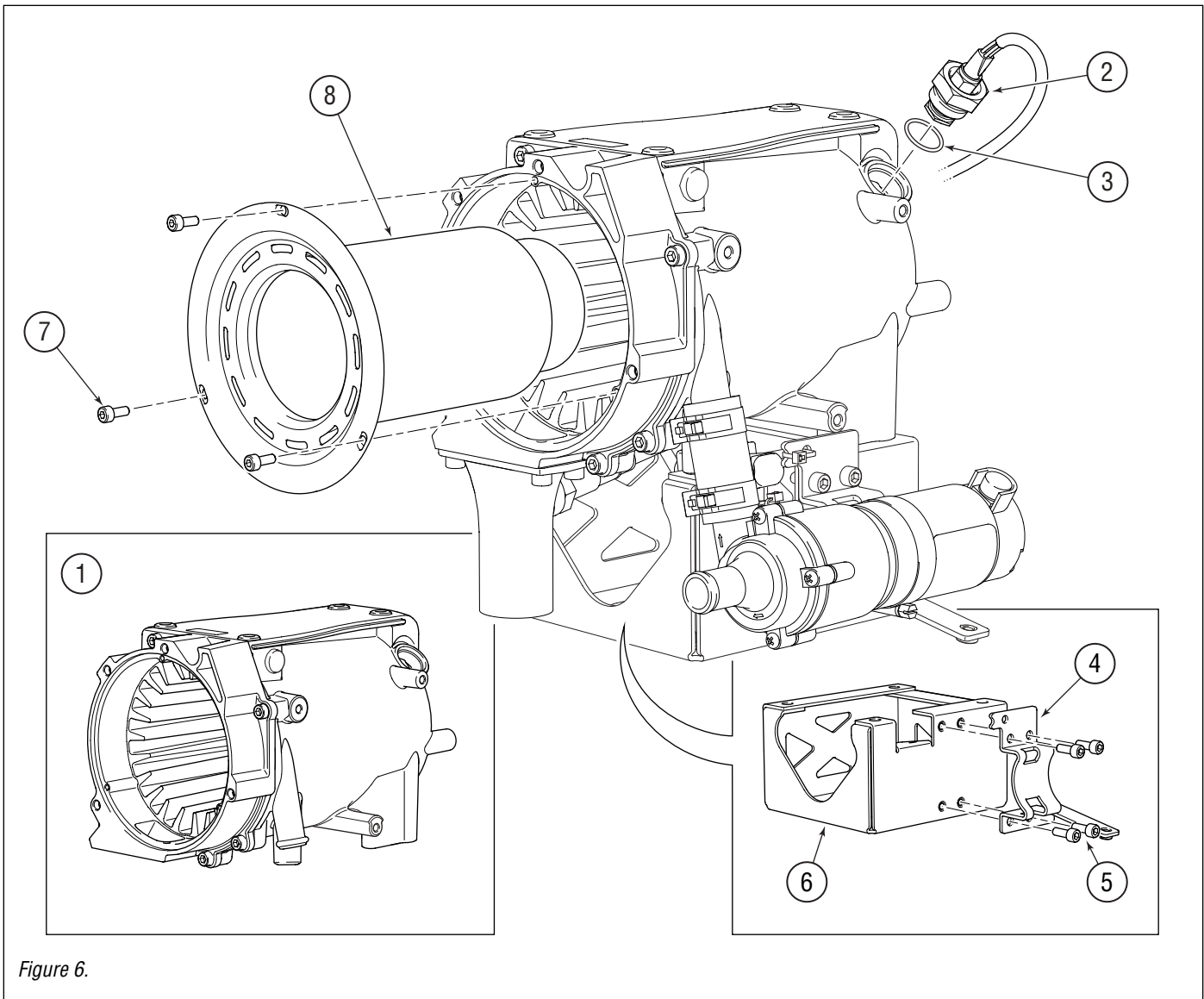


Figure 6.

ITEM	PART#	DESCRIPTION
1	149001K	Heat Exchanger
2	149010K	Sensor, Temperature, Dual Mode <i>c/w O-Ring</i>
3	917724K	O-Ring, Sensor, Temperature
4	149060K	Mount, Coolant Pump <i>c/w screws</i>
5	149021K	Screw, M6 x 1 x 16, ZP (4/pkg)
6	See page 7	Mount, Cradle, X30
7	149047K	Screw, M4 X 0.7 X 10, ZP (3/pkg)
8	149067K	Assembly, Combustion Tube, <i>c/w screws</i>

ITEM	PART#	DESCRIPTION
------	-------	-------------

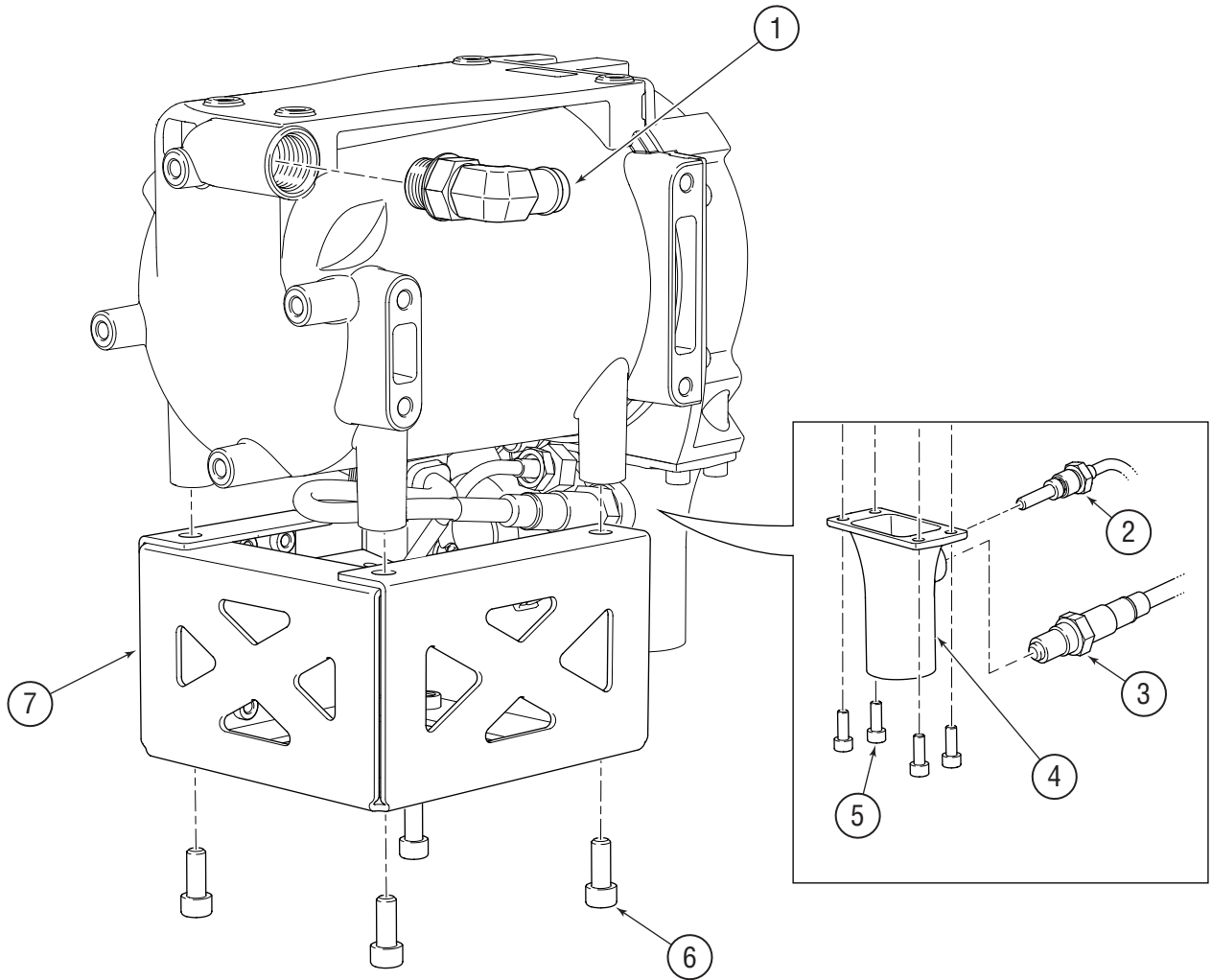


Figure 7.

ITEM	PART#	DESCRIPTION
1	149024K	Fitting, Elbow, Hose, 3/4 to -10 ORB
2	149077K	EGT Sensor
3	149800K	Oxygen Sensor
4	149080K	Exhaust Flange, Straight <i>c/w screws item 6</i>
5	149021K	Screw, M6 X 1 X 16, ZP (4/pkg)
6	149025K	Screw, M8 X 1.25 X 20, ZP (4/pkg)
7	149061K	Mount, Cradle, X30, <i>c/w screws item 6</i>

ITEM	PART#	DESCRIPTION
------	-------	-------------

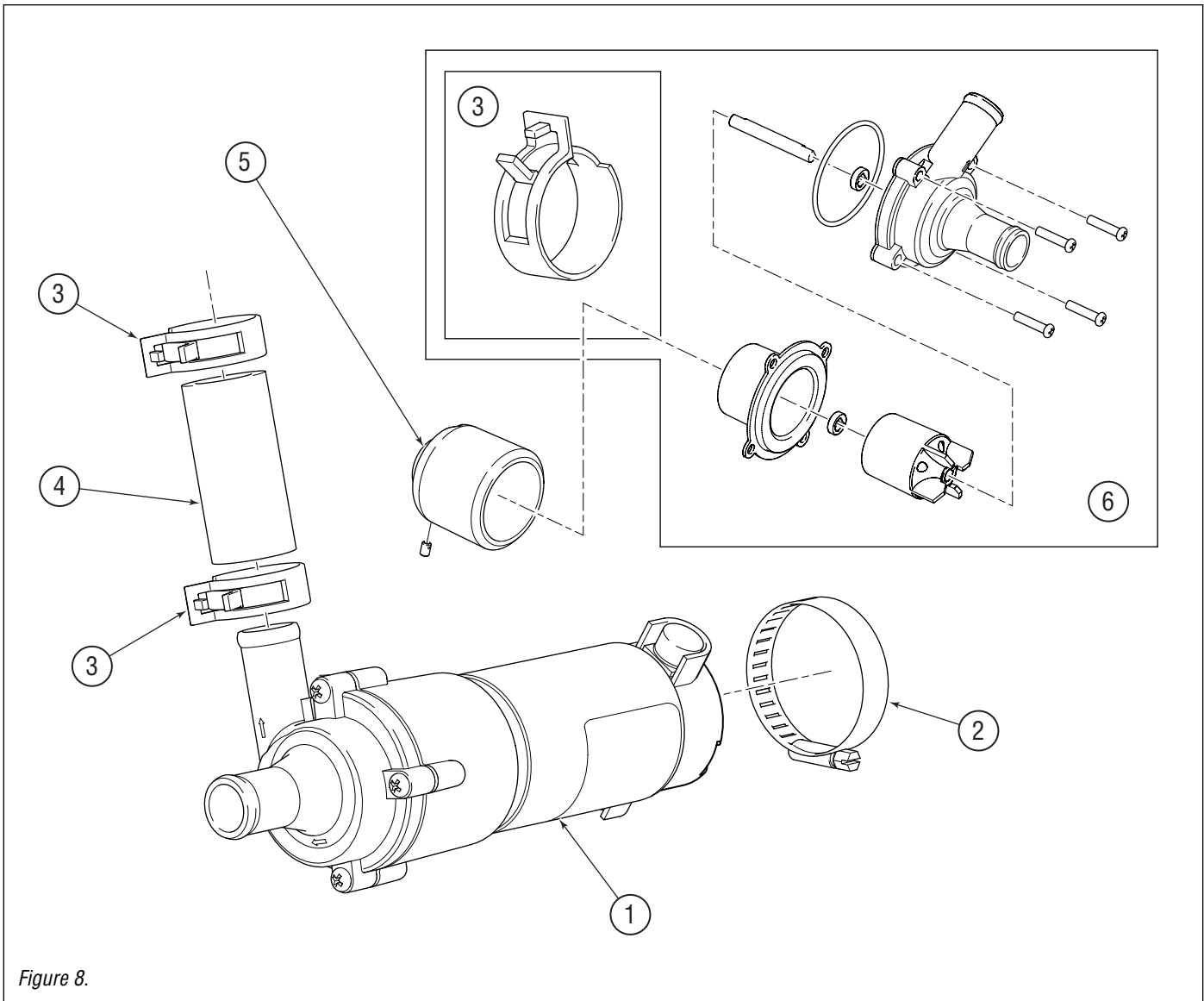


Figure 8.

ITEM	PART#	DESCRIPTION
1	149460K	Assembly, X30 Coolant Pump, c/w items 1 through 4
2	149076K	Clamp, Gear #28 SS
3	149372K	Clamp, Coolant Hose (2/pkg)
4	149034K	Hose, Coolant, 3/4 x 2.5"
5	972726K	Coolant Pump Drive Cup, c/w set screw

ITEM	PART#	DESCRIPTION
6	865893K	KIT, COOLANT PUMP REBUILD Includes: Cup, Separator Washer, Thrust Magnet, Impeller Shaft, Impeller O-Ring Pump Body Fasteners Clamp, Coolant Hose (2x) Instructions, Pump Rebuild (Not shown)

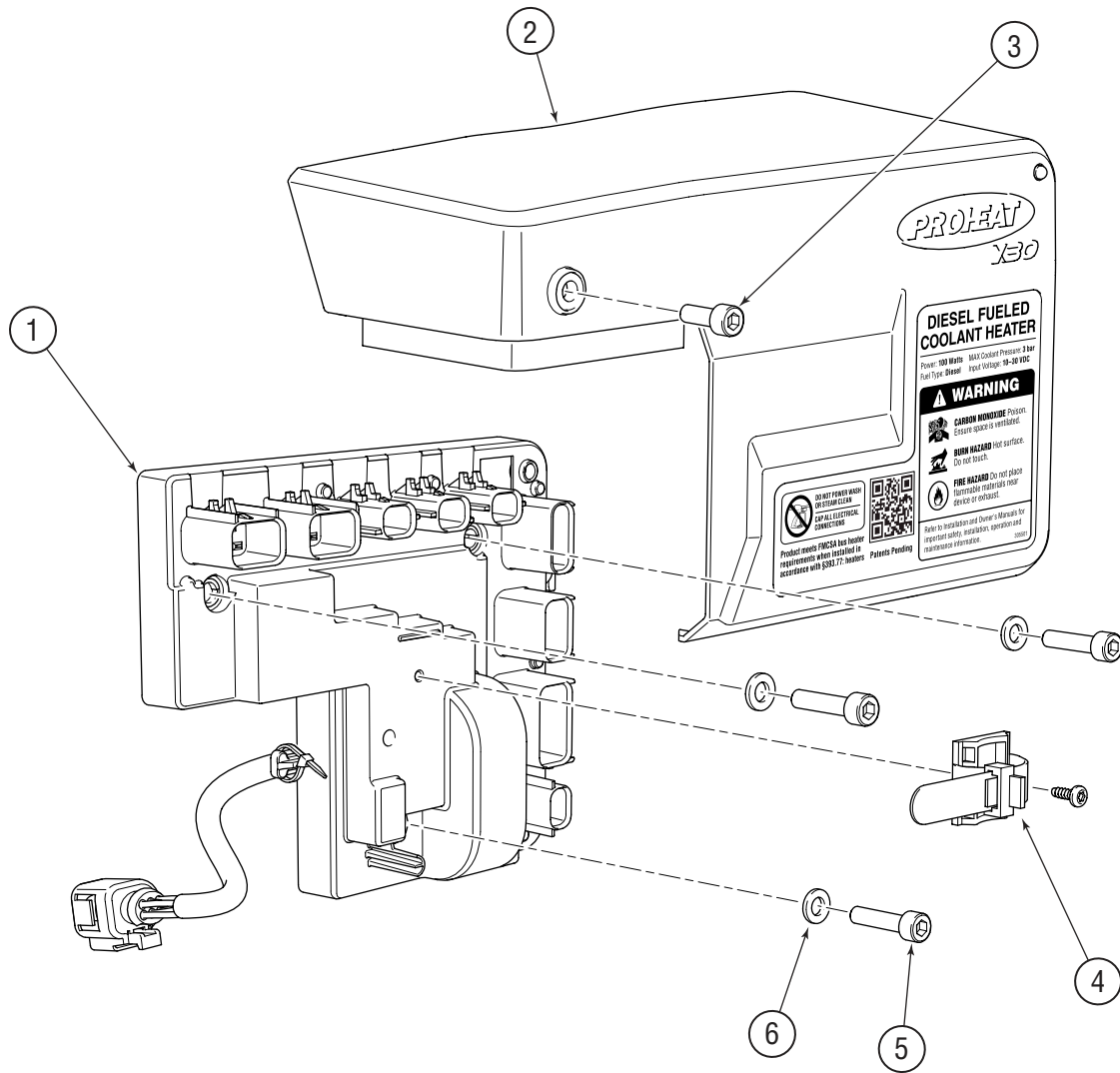


Figure 9.

ITEM	PART#	DESCRIPTION
1	305520K	PCM, X30, Standard
<p>NOTE: Transit Bus and Motor Coach heaters have specific software. The Basic PCM's listed above are not intended to be used in Transit Bus and Motor Coach applications.</p> <p>Transit Bus and Motor Coach OEM Specific PCM Part Numbers are listed below.</p>		
	305112K	PCM, X30, Nova Bus Specific
	305114K	PCM, X30, New Flyer Specific
	305145K	PCM, X30, Gillig Specific

ITEM	PART#	DESCRIPTION
2	305575K	Cover, PCM, X30
3	149021K	Screw, M6 X 1 X 16, ZP (4/pkg)
4	305527K	Strain Relief, Tie Strap, c/w screw
5	850375K	Screw, M6 X 1 X 25, ZP (3/pkg)
6	305547K	Washer, M6 X 12, ZP (4/pkg)

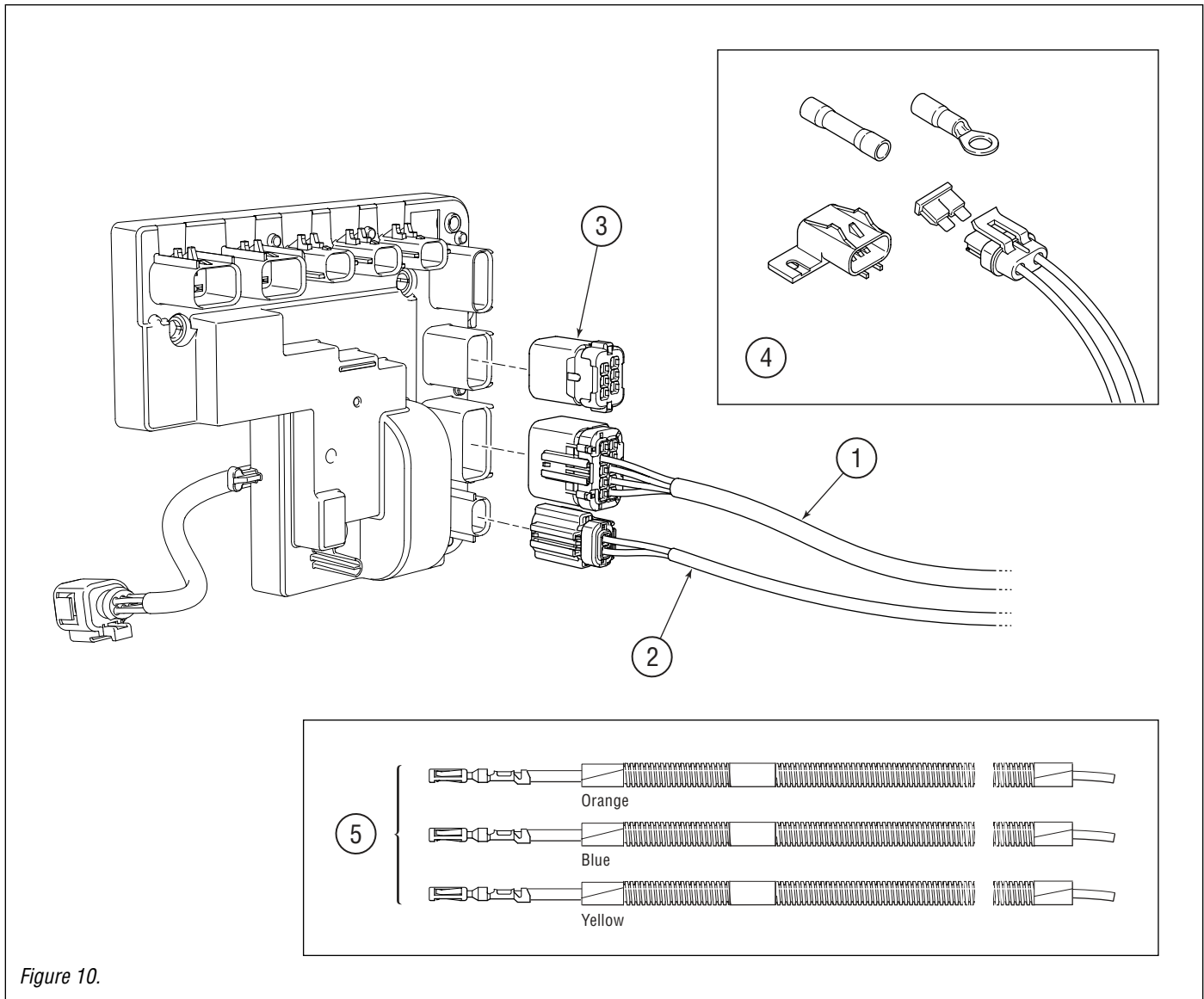


Figure 10.

ITEM	PART#	DESCRIPTION
1	149327K	Harness, Switch/Control, 25'
	149480K	Harness, Switch/Control, 50'
2	149328K	Harness, Power, 16'
	149472K	Harness, Power, 50'
3	149695K	Plug, PCM, Coolant Pump
4	978888K	Kit, Fuse, Battery 15A (Also used for adding a ground side fuse)
5	149400K	Harness, Optional, X30, Add in Switch/Control 25' c/w 3 wires Yellow, Blue and Orange
6	See page 19	Harness, PCM CAN Add In, 10' (Not shown)

ITEM	PART#	DESCRIPTION
7	149912K	Harness, Coolant Pump Relay, 12V (Not shown)
8	149517K	Harness, Control, Switch/CAN, Transit 43" (Not shown)
9	149518K	Harness, Power, Transit, 43" (Not shown)
10	149524K	Harness, Control, CAN Only, Transit 24" (Not shown)
11	149527K	Harness, Control, Switch/CAN, Transit, 24" (Not shown)
12	149588K	Harness, Power, Transit, 24.5" (Not shown)

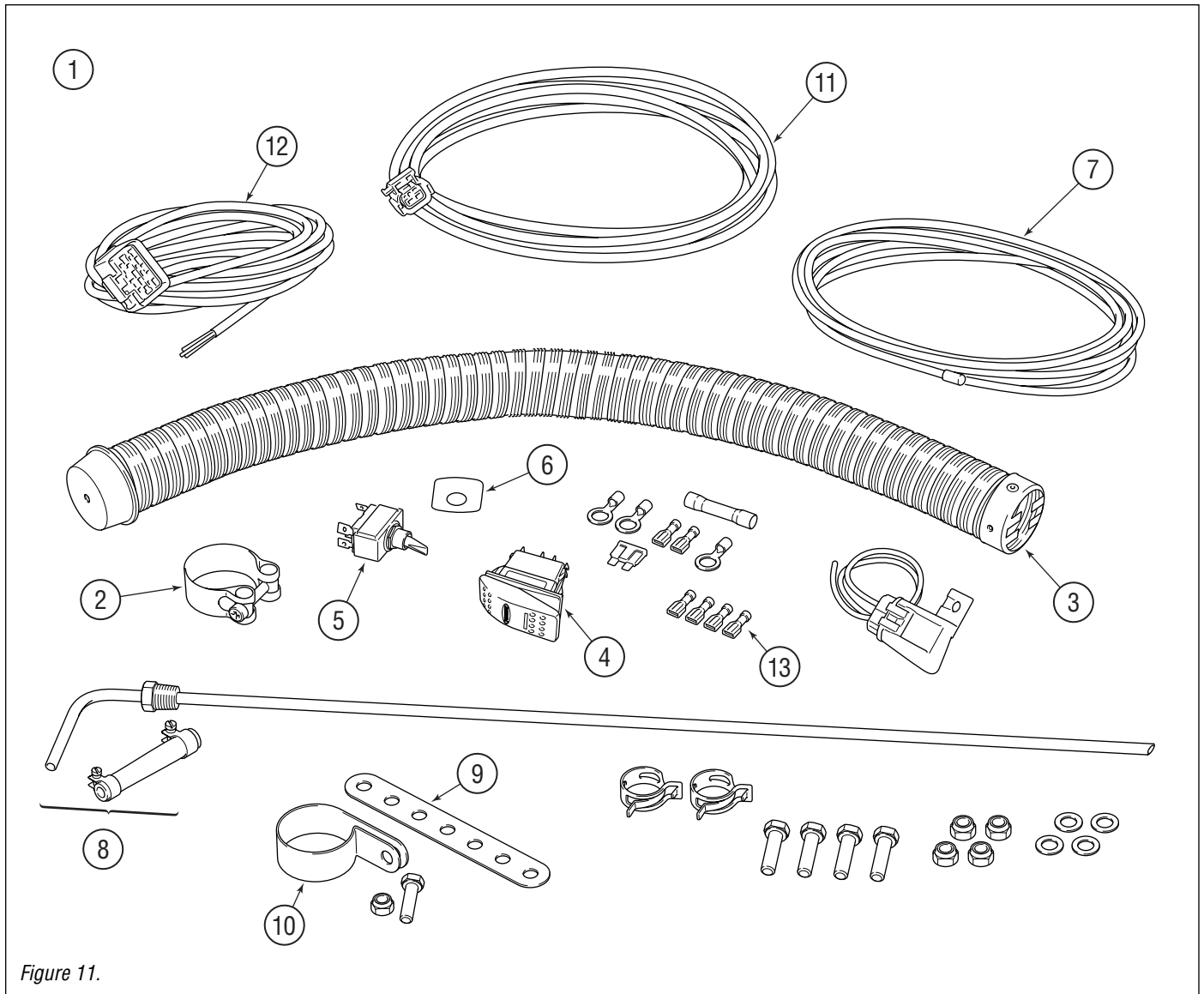


Figure 11.

ITEM	PART#	DESCRIPTION
1	PK3014	KIT, X30, STANDARD INSTALLATION <i>c/w all items except item 5 and item 6</i>
	PK3018	KIT, X30, 12 VOLT, SCHOOL BUS INSTALLATION <i>c/w 40' fuel line and item 5 instead of item 6. (Not Shown)</i>
	PK3050	KIT, X30, 12 VOLT, SCHOOL BUS EXTENDED HARNESS INSTALLATION (50') <i>(Not Shown)</i>

ITEM	PART#	DESCRIPTION
2	149366K	Clamp, Exhaust, 1.65"
3	149359K	Exhaust, Flexible, 1.5" x 2' <i>c/w clamp, item 2</i>
4	920130K	Rocker Switch, On/Off, 12/24V
5	920125K	Switch, On/Off, 12V <i>(Legacy replacement)</i>
6	919626K	Decal, Toggle Switch
7	149690K	Fuel Line, 3/16" x 15ft
8	149498K	Pick-Up, Fuel, 24", <i>c/w fittings</i>
9	149423K	Hanger, Exhaust
10	149371K	Clamp, Hanger, Exhaust
11	149328K	Harness, Power, 16'
12	149327K	Harness, Switch/Control, 25'
13	769125K	Connector, Female Spade, 1/4" (4/pkg)

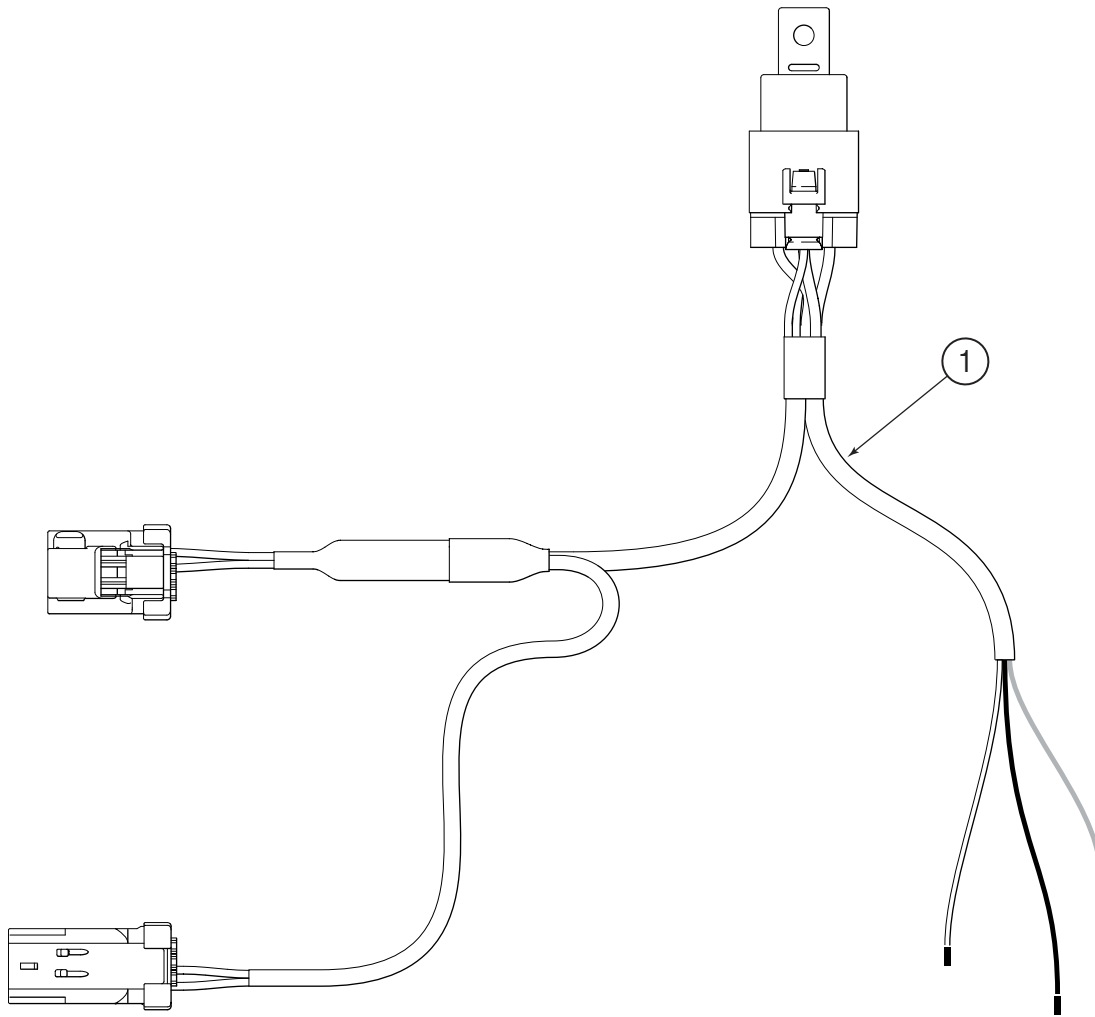


Figure 12.

ITEM	PART#	DESCRIPTION
1	149912K	Harness, Coolant Pump Relay, 12V

ITEM	PART#	DESCRIPTION
------	-------	-------------

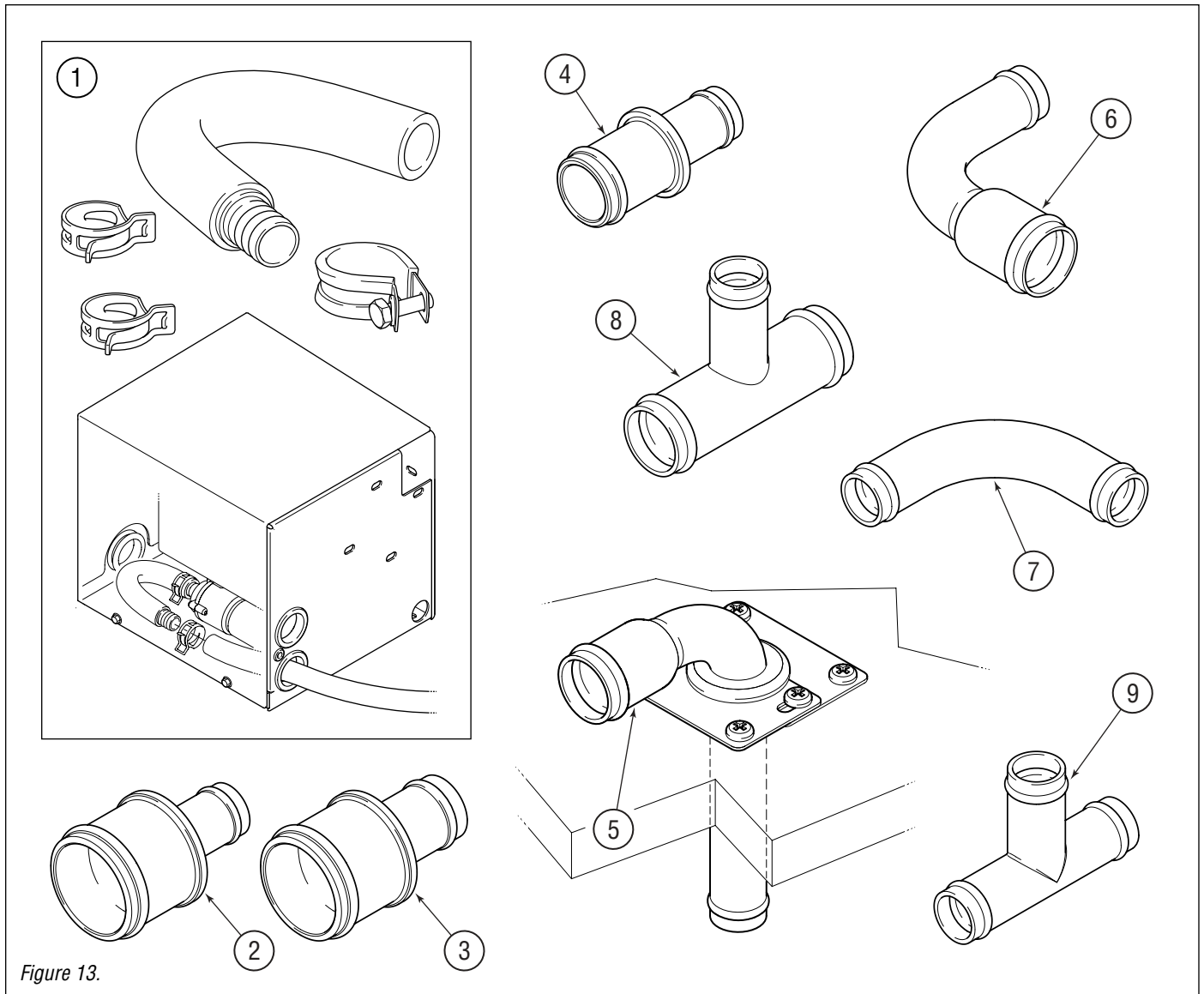


Figure 13.

ITEM	PART#	DESCRIPTION
1	PK3010	KIT, COOLANT HOSE, 180°- 0.75"
2	769335K	Fitting, Straight, Reducing 1.5" to 0.75"
3	769235K	Fitting, Straight, Reducing 1.5" to 1.0"
4	769338K	Fitting, Straight, Reducing 1.0" to 0.75"
5	149851K	Kit, Elbow, Reducing, Long, Through Floor (1/pkg)
6	769336K	Elbow, Reducing, Short, 1.0" to 0.75"
7	769340K	Elbow, Short, 0.75"
8	769337K	Tee, Reducing, Short 1.0" to 0.75"
9	769339K	Tee, Short, 0.75"

ITEM	PART#	DESCRIPTION

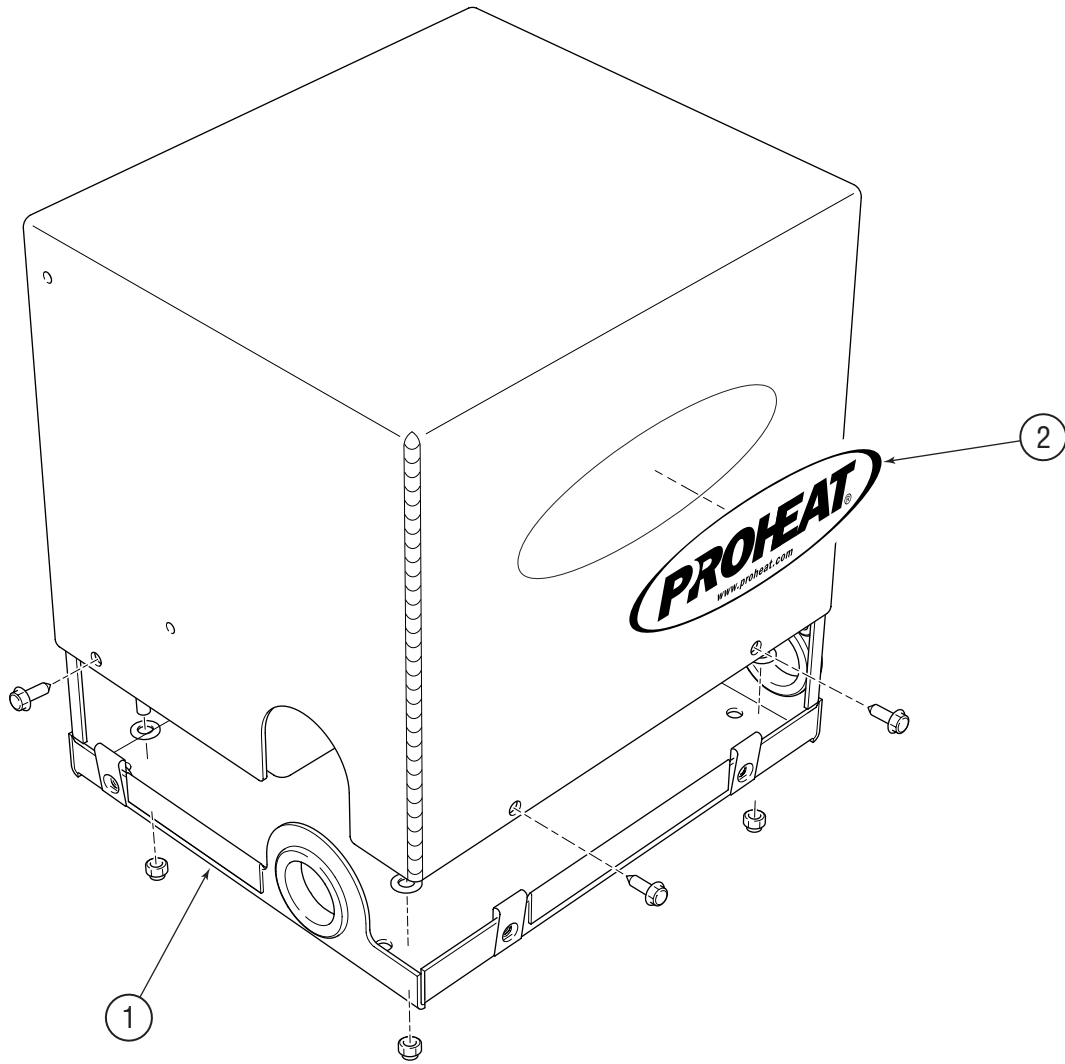


Figure 14.

ITEM	PART#	DESCRIPTION
1	PK3002	KIT, ENCLOSURE, PLAIN
2	977621K	Decal, Proheat

ITEM	PART#	DESCRIPTION
------	-------	-------------

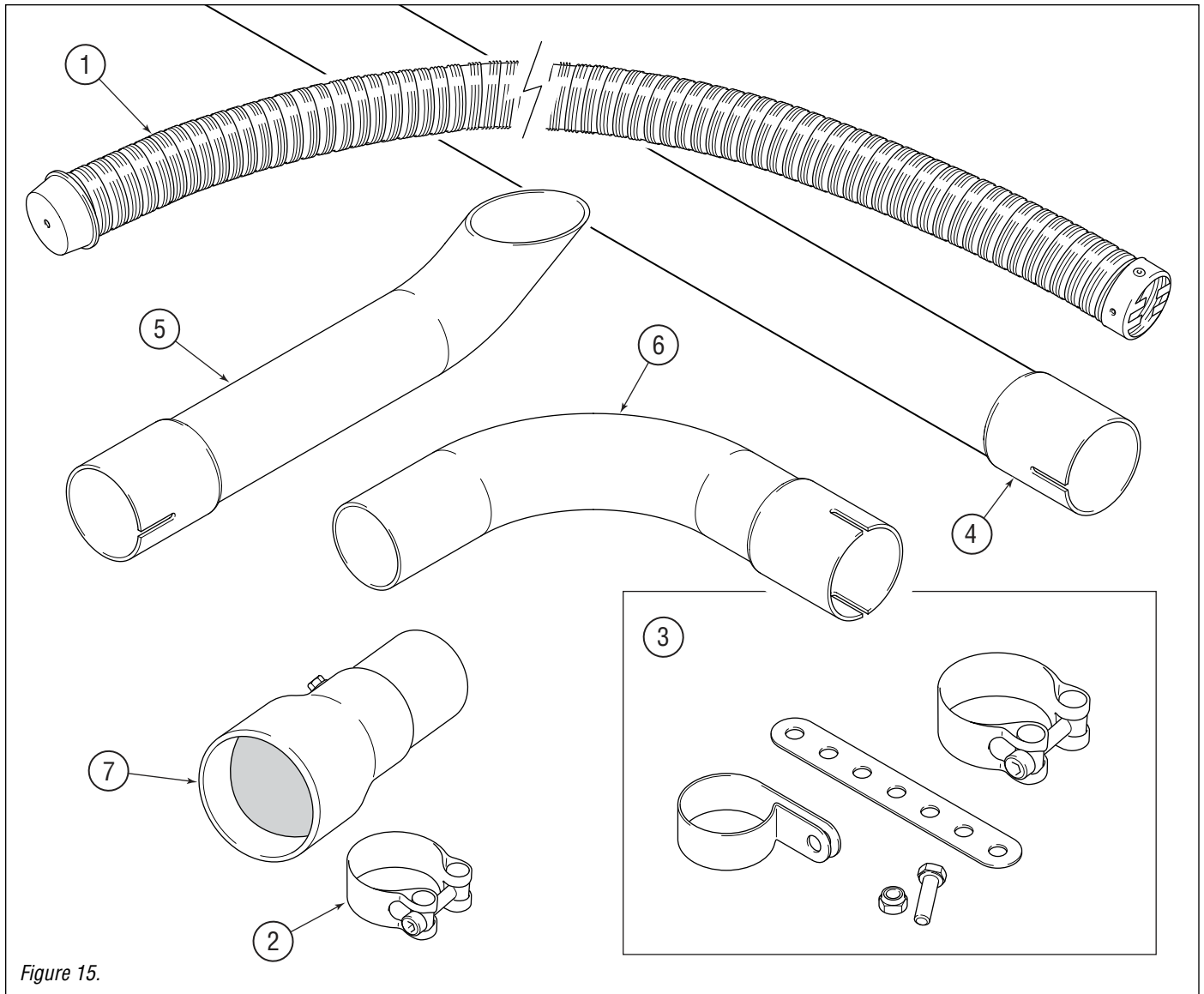


Figure 15.

ITEM	PART#	DESCRIPTION
1	PK3008	KIT, EXTENDED EXHAUST, 5' <i>c/w item 3</i>
2	149366K	Exhaust, SS Band Clamp, 1.65"
3	149386K	Kit, Exhaust, Hardware
4	149862K	Exhaust, Solid, 2' straight <i>c/w item 3</i>
5	149860K	Exhaust, Solid 10", Tailpipe <i>c/w item 2</i>
6	149861K	Exhaust, Solid 90° Elbow, <i>c/w item 2</i>

ITEM	PART#	DESCRIPTION
7	PK3009	KIT, EXHAUST, SPARK ARRESTOR <i>c/w item 2</i>

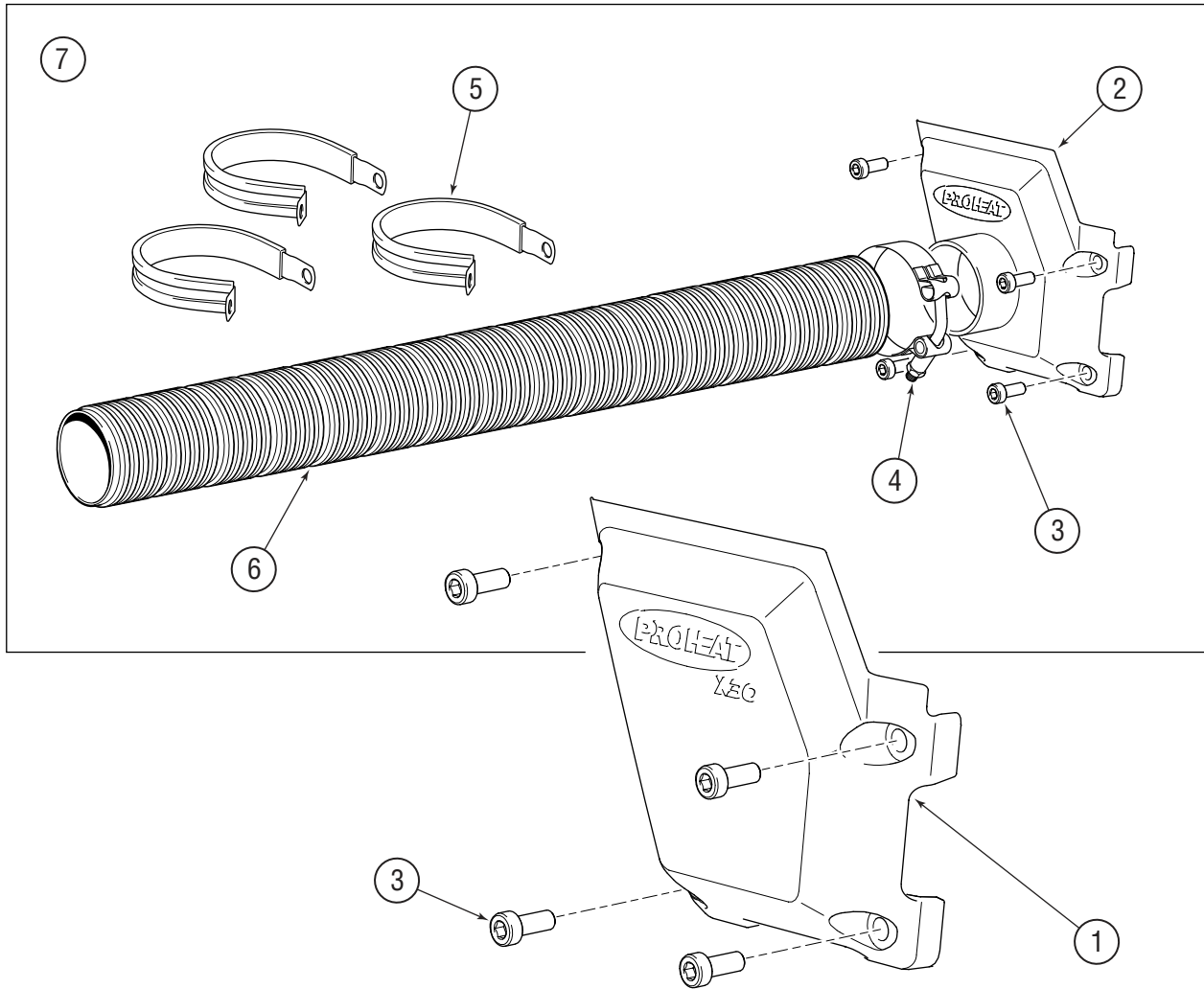
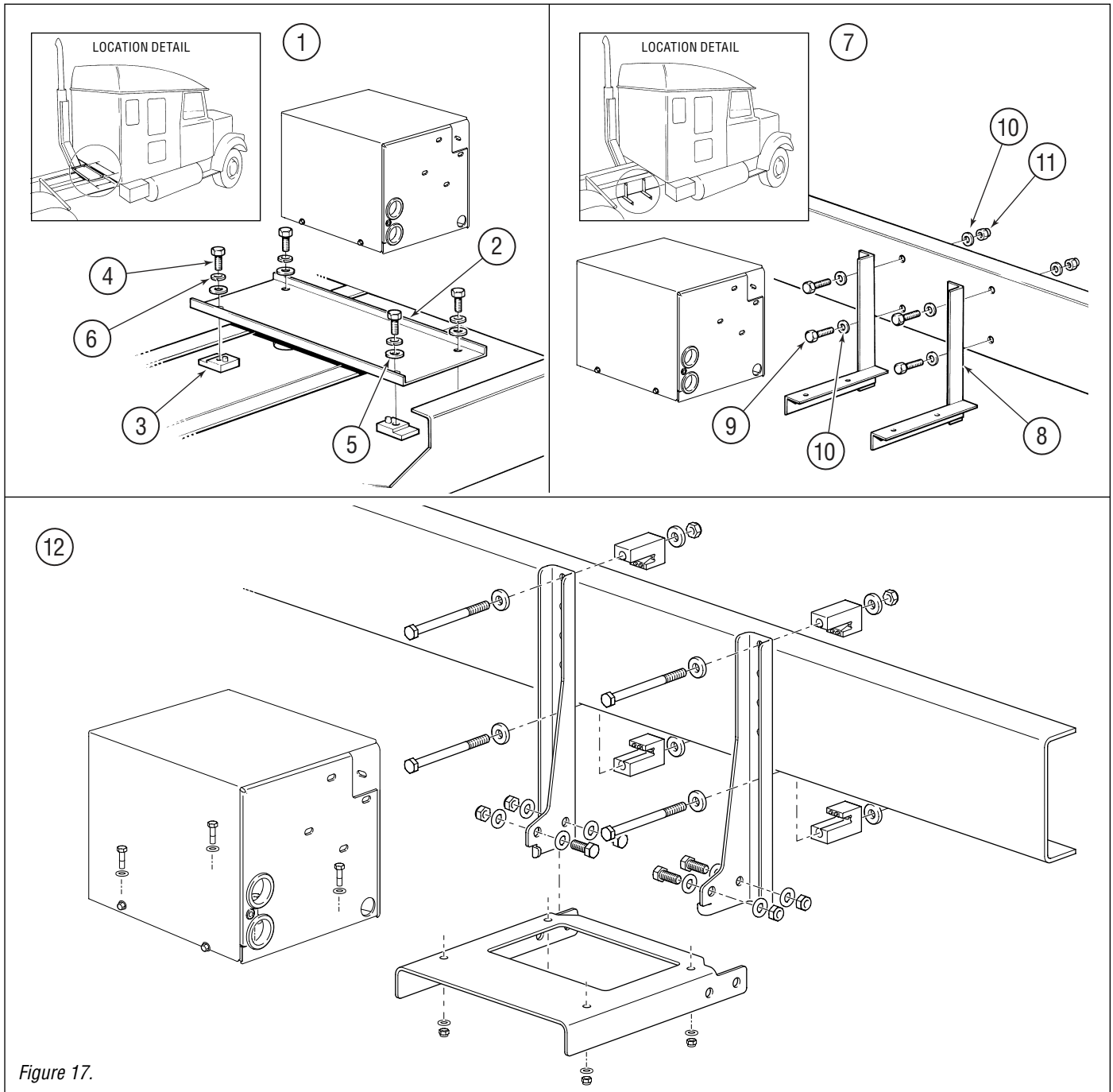


Figure 16.

ITEM	PART#	DESCRIPTION
1	149340K	Cover, Splash Guard, c/w screws, item 3
2	149240K	Cover, Snorkel Adapter, 44 mm c/w screws, item 3
	149245K	Cover, Snorkel Adapter, 55 mm c/w screws, item 3
3	207512K	Screw, M5 X 0.8 X 12, ZP, Low Profile (12/pkg)
4	149367K	Clamp, Intake, 1.9"
5	149369K	Clamp, Cushioned, 2" (-32) (3/pkg)
6	149396K	Intake, Pipe, Flexible, 1.77" x 5'

ITEM	PART#	DESCRIPTION
7	PK3007	KIT, SNORKEL, 5' c/w item 2, 3, 4, 5, 6, and hardware kit



ITEM	PART#	DESCRIPTION
1	PK3006	KIT, MOUNTING, CROSS FRAME <i>c/w item 2, 3, 4, 5, and 6</i>
2		Tray
3		Block Clamp (4x)
4		Bolt, 3/8" NC x 1" Hex HD (4x)
5		Washer, 3/8" (per assembly) (4x)
6		Lockwasher, 3/8" (4x)

ITEM	PART#	DESCRIPTION
7	PK0152	KIT, MOUNTING, SIDE FRAME <i>c/w item 8, 9, 10, and 11</i>
8		Bracket (2x)
9		Bolt, 3/8" NC x 1-1/2" Hex HD (4x)
10		Washer, 3/8" Flat (8x)
11		Nut, Self Locking, 3/8" NC (4x)
12	PK3016	KIT, MOUNTING, SIDE FRAME, NO DRILL

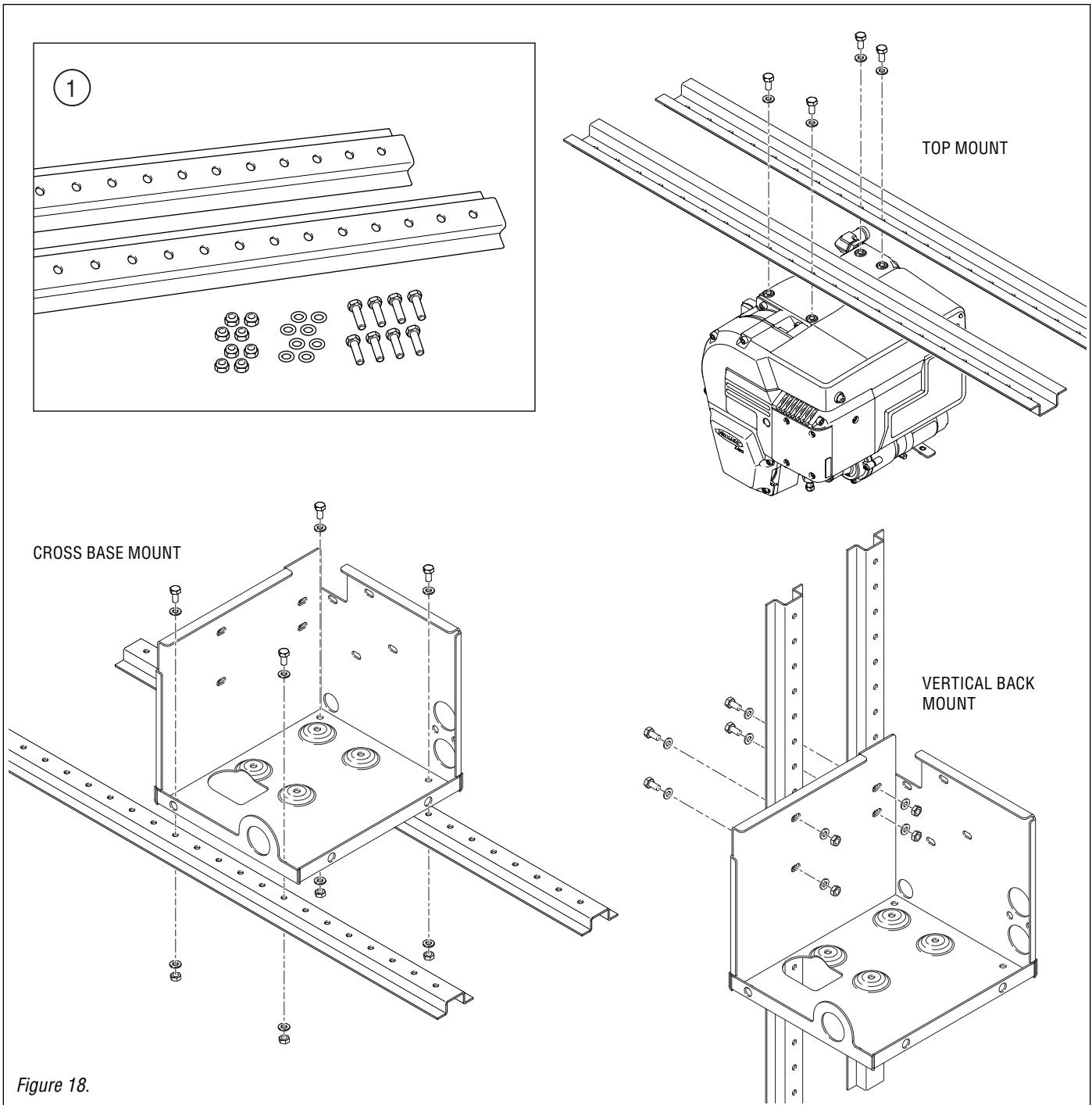


Figure 18.

ITEM	PART#	DESCRIPTION
1	PK3005	KIT, MOUNTING, UNIVERSAL <i>c/w fasteners</i>

ITEM	PART#	DESCRIPTION
------	-------	-------------

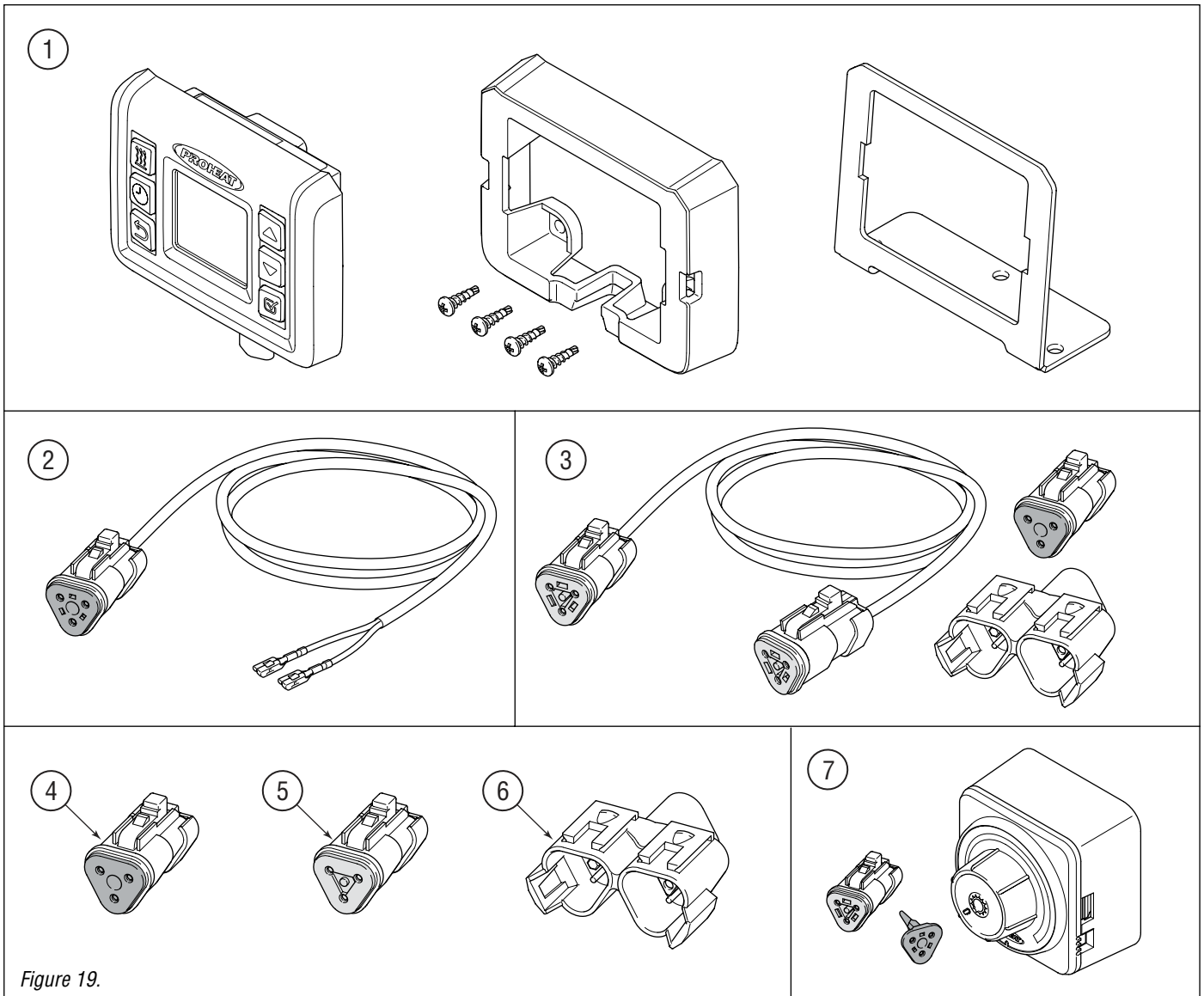


Figure 19.

ITEM	PART#	DESCRIPTION
1	PK3000	KIT, PROHEAT FUNCTION CONTROLLER (PFC), CAN bus c/w item 2, 5, and 6
2	149410K	Harness, PCM CAN Add In, 10'
3	149306K	Extension, Backbone, 10' c/w CAN dust plug item 4, and CAN 'T' connector item 6
	149307K	Extension, Backbone, 16' c/w CAN dust plug item 4, and CAN 'T' connector item 6
	149308K	Extension, Backbone, 25' c/w CAN dust plug item 4, and CAN 'T' connector item 6

ITEM	PART#	DESCRIPTION
4	149415K	CAN Dust Plug
5	149418K	CAN Termination Resistor
6	149417K	CAN 'T' Connector
7	PK3001	KIT, PROHEAT THERMOSTAT, CAN bus c/w item 2, 5, and 6

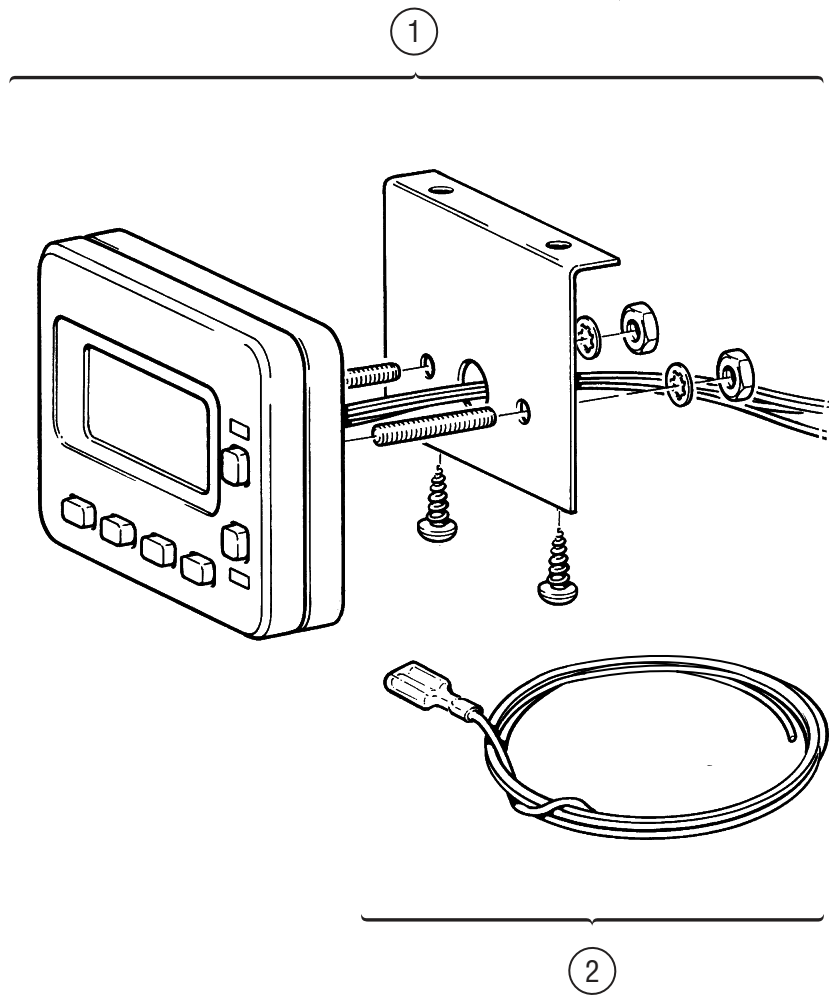


Figure 20.

ITEM	PART#	DESCRIPTION
1	PK0001-1	KIT, T-II TIMER, 7-DAY DIGITAL c/w Installation Kit

ITEM	PART#	DESCRIPTION
2	961125K	KIT, INSTALLATION, TIMER Includes: bracket, Velcro, wire, screws, studs, nuts and washers

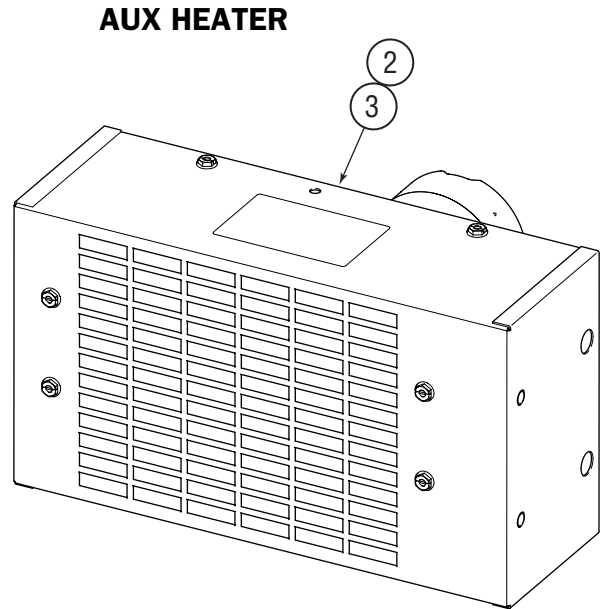
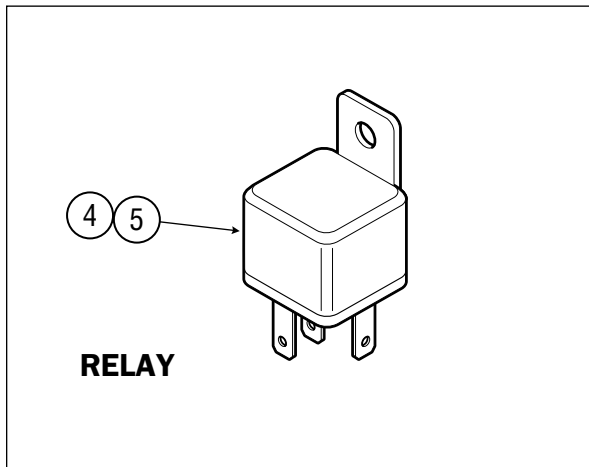
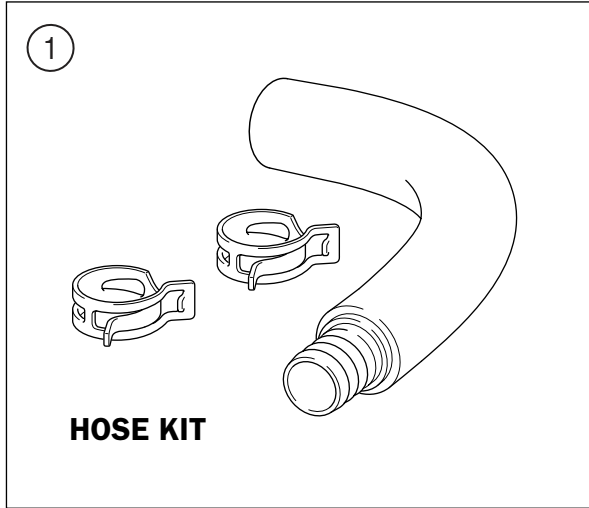


Figure 21.

ITEM	PART#	DESCRIPTION
1	PK3013	Kit, Coolant Hose, 90° Elbow, 3/4" (2/pkg)
AUX HEATER KITS		
3	PK3004	Kit, Bunk Heater, 24V
4	PK3012	Kit, Bunk Heater, 12V

ITEM	PART#	DESCRIPTION
RELAY		
5	754929K	Relay, 12V, 20A
6	755029K	Relay, 24V, 20A

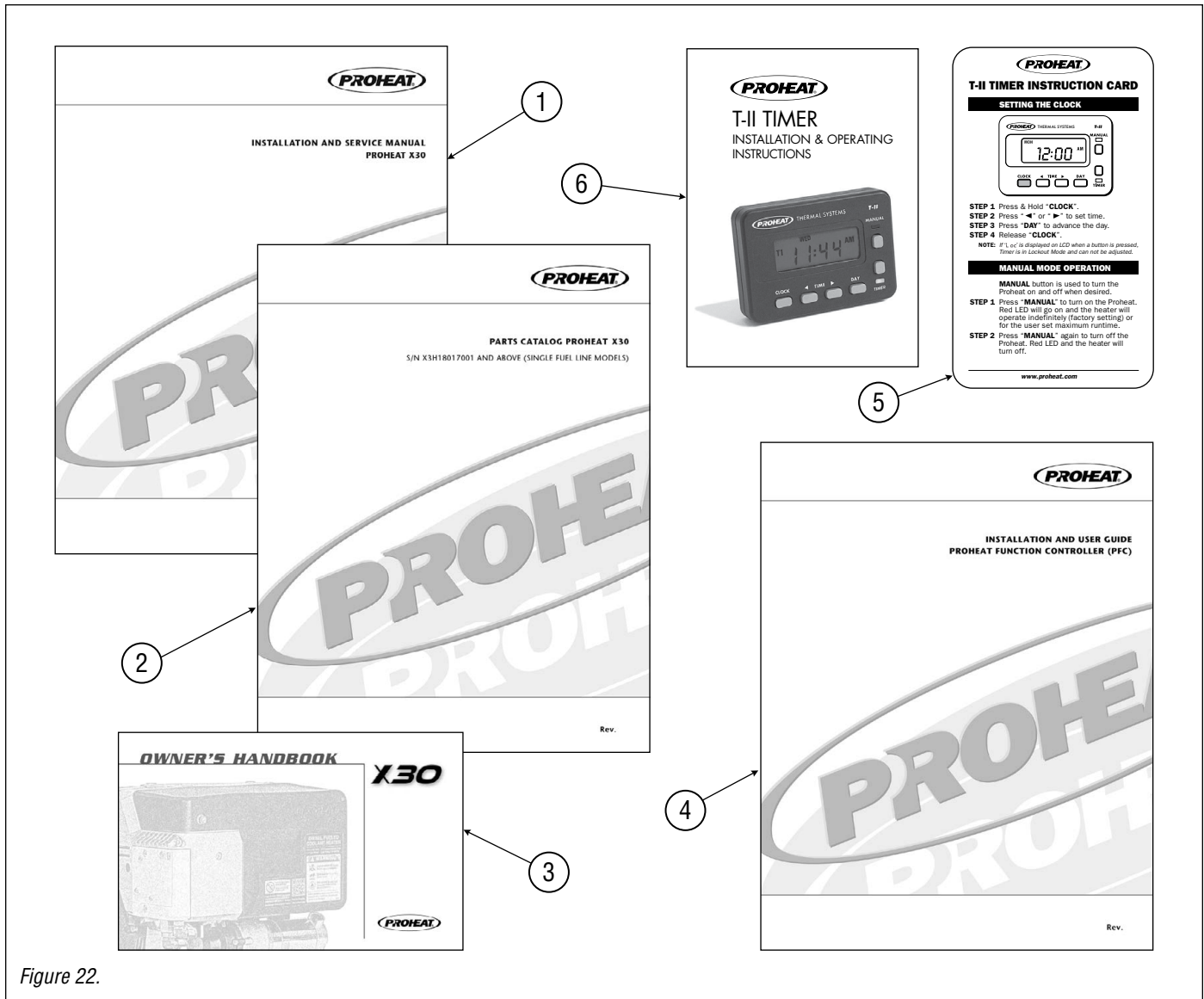


Figure 22.

ITEM	PART#	DESCRIPTION
1	SL9211	X30 Installation & Service Manual, Single Fuel Line Models, s/n X3H18017001 and above
	SL9208	X30 Installation & Service Manual, Dual Fuel Line Models, s/n X3H18017000 and below
2	SL9212	X30 Parts Catalog, Single Fuel Line Models, s/n X3H18017001 and above
	SL9209	X30 Parts Catalog, Dual Fuel Line Models, s/n X3H18017000 and below
3	SL9210	X30 Owner's Handbook, Single Fuel Line Models, s/n X3H18017001 and above
	SL9206	X30 Owner's Handbook, Dual Fuel Line Models, s/n X3H18017000 and below
4	949900	PFC Installation and User Guide

ITEM	PART#	DESCRIPTION
5	SL9035-1	T-II Timer Instruction Card
6	958829	T-II Timer Installation & Operating Instructions
<p><i>All manuals are available for download from www.proheat.com</i></p>		

PART#	DESCRIPTION	PAGE#	PART#	DESCRIPTION	PAGE#
149001K	Heat Exchanger	6	149415K	CAN Dust Plug.....	19
149010K	Sensor, Temperature, Dual Mode c/w O-Ring ...	6	149417K	CAN 'T' Connector	19
149021K	Screw, M6 x 1 x 16, ZP (4/pkg)	6, 7, 9	149418K	CAN Termination Resistor.....	19
149024K	Fitting, Elbow, Hose, 3/4 to -10 ORB.....	7	149423K	Hanger, Exhaust	11
149025K	Screw, M8 X 1.25 X 20, ZP (4/pkg).....	7	149424K	Seal, Nozzle Insert.....	1
149034K	Hose, Coolant, 3/4 x 2.5"	8	149426K	Nozzle, 30609-32X Fuel c/w O-Ring	1
149047K	Screw, M4 X 0.7 X 10, ZP (3/pkg).....	6	149450K	Module, Ignition c/w screws.....	5
149060K	Mount, Coolant Pump c/w screws.....	6	149456K	Electrode, Ignition c/w screws.....	5
149061K	Mount, Cradle, X30, c/w screws.....	7	149460K	Assembly, X30 Coolant Pump.....	8
149067K	Assembly, Combustion Tube, c/w screws	6	149472K	Harness, Power, 50'	10
149076K	Clamp, Gear #28 SS.....	8	149480K	Harness, Switch/Control, 50'	10
149077K	EGT Sensor	7	149481K	Screen, Fuel, c/w O-Ring.....	3
149080K	Exhaust Flange, Straight c/w screws	7	149482K	Kit, Fitting, Fuel, Straight -6 ORB 3/16 Tube....	3
149093K	O-Ring, 2-202 (2/pkg).....	3	149498K	Pick-Up, Fuel, 24", c/w fittings.....	11
149120K	O-Ring, 0.902, 75 DUR (2/pkg)	3	149506K	Kit, Hardware, 3/16 Fuel Fitting, c/w sleeve and nut.....	3
149153K	Assembly, Diffuser Cone.....	5	149517K	Harness, Control, Switch/CAN, Transi 43"	10
149160K	Fuel Pump Assembly, c/w O-Rings, Fuel Fittings and Fuel valve	3	149518K	Harness, Power, Transit, 43"	10
149240K	Cover, Snorkel Adapter, 44 mm, c/w screws ..	16	149524K	Harness, Control, CAN Only, Transit 24"	10
149245K	Cover, Snorkel Adapter, 55 mm, c/w screws...	16	149527K	Harness, Control, Switch/CAN, Transit, 24"....	10
149306K	Extension, Backbone, 10' c/w CAN dust plug and CAN 'T' connector	19	149588K	Harness, Power, Transit, 24.5"	10
149307K	Extension, Backbone, 16' c/w CAN dust plug and CAN 'T' connector	19	149675K	Kit, Fitting, Elbow -6 ORB 3/16 Tube.....	3
149308K	Extension, Backbone, 25' c/w CAN dust plug and CAN 'T' connector	19	149690K	Fuel Line, 3/16" x 15ft	11
149309K	Assembly, Compressor	2	149695K	Plug, PCM, Coolant Pump.....	10
149312K	Wire Clip, Compressor, c/w screws.....	2	149711K	Assembly, Burnerhead	1
149324K	Kit, Air Filter Cover, c/w screws	2	149713K	Casting, Fan End	4
149327K	Harness, Switch/Control, 25'	10, 11	149800K	Oxygen Sensor	7
149328K	Harness, Power, 16'	10, 11	149851K	Kit, Elbow, Reducing, Long, Through Floor (1/pkg)	13
149329K	Seal, Compressor to Fan End	2	149860K	Exhaust, Solid 10", Tailpipe.....	15
149333K	Fan Blade, Capped	4	149861K	Exhaust, Solid 90° Elbow	15
149339K	Spacer, Thermal Break.....	4	149862K	Exhaust, Solid, 2' straight	15
149340K	Cover, Splash Guard, c/w screws	16	149912K	Harness, Coolant Pump Relay, 12V.....	10, 12
149345K	Blower Speed Sensor, c/w screws.....	4	149931K	Blower Assembly c/w speed sensor and fan blade	4
149359K	Exhaust, Flexible, 1.5" x 2' c/w clamp	11	207001K	Kit, Fuel Pump Fastener M5 x 0.8 x 30 ZP (4/pkg)	1, 2, 3
149366K	Clamp, Exhaust, 1.65"	11, 15	207012K	Screw, M5 x 0.8 x 12 ZP (4/pkg)	2
149367K	Clamp, Intake, 1.9"	16	207512K	Screw, M5 x 0.8 x 12, ZP, Low Profile (12/pkg)	4, 5, 16
149369K	Clamp, Cushioned, 2" (-32) (3/pkg)	16	221443K	O-Ring, 0.007, 75 DUR (2/pkg).....	1, 3
149371K	Clamp, Hanger, Exhaust.....	11	305112K	PCM, X30, Nova Bus Specific.....	9
149372K	Clamp, Coolant Hose (2/pkg)	8	305114K	PCM, X30, New Flyer Specific.....	9
149386K	Kit, Exhaust, Hardware	15	305145K	PCM, X30, Gillig Specific	9
149396K	Intake, Pipe, Flexible, 1.77" x 5'	16	305520K	PCM, X30, Standard	9
149400K	Harness, Optional, X30, Add in Switch/Control 25' c/w 3 wires Yellow, Blue and Orange.....	10	305527K	Strain Relief, Tie Strap, c/w screw.....	9
149410K	Harness, PCM CAN Add In, 10'.....	19	305547K	Washer, M6 X 12, ZP (4/pkg)	9

NUMERIC PARTS INDEX



PART#	DESCRIPTION	PAGE#			
305575K	Cover, PCM, X30	9	PK3010	Kit, Coolant hose, 180°– 0.75”	13
754929K	Relay, 12V, 20A.....	21	PK3012	Kit, Bunk Heater, 12V	21
755029K	Relay, 24V, 20A.....	21	PK3013	Kit, Coolant Hose, 90° Elbow, 3/4” (2/pkg)....	21
769125K	Connector, Female Spade, 1/4” (4/pkg).....	11	PK3014	Kit, X30, Standard Installation	11
769235K	Fitting, Straight, Reducing 1.5” to 1.0”	13	PK3016	Kit, Mounting, Side Frame, No Drill.....	17
769335K	Fitting, Straight, Reducing 1.5” to 0.75”	13	PK3018	Kit, X30, 12 Volt, School Bus Installation c/w 40’ fuel line	11
769336K	Elbow, Reducing, Short, 1.0” to 0.75”	13	PK3050	Kit, X30, 12 Volt, School Bus Extended Harness Installation (50’).....	11
769337K	Tee, Reducing, Short 1.0” to 0.75”	13	SL9035-1	T-II Timer Instruction Card	22
769338K	Fitting, Straight, Reducing 1.0” to 0.75”	13	SL9206	X30 Owner’s Handbook, Dual Fuel Line Models, s/n X3H18017000 and below	22
769339K	Tee, Short, 0.75”	13	SL9208	X30 Installation & Service Manual, Dual Fuel Line Models, s/n X3H18017000 and below	22
769340K	Elbow, Short, 0.75”.....	13	SL9209	X30 Parts Catalog, Dual Fuel Line Models, s/n X3H18017000 and below	22
829325K	Hex Plug, c/w O-Ring	2, 3	SL9210	X30 Owner’s Handbook, Single Fuel Line Models, s/n X3H18017001 and above	22
850232K	Kit, Compressor Fastener	1, 2	SL9211	X30 Installation & Service Manual, Single Fuel Line Models, s/n X3H18017001 and above	22
850360K	Screw, M6 x 1 x 65 ZP (4/pkg)	1	SL9212	X30 Parts Catalog, Single Fuel Line Models, s/n X3H18017001 and above	22
850375K	Screw, M6 X 1 X 25, ZP (3/pkg).....	9			
865893K	Kit, Coolant Pump Rebuild.....	8			
917724K	O-Ring, Sensor, Temperature.....	6			
919626K	Decal, Toggle Switch.....	11			
920125K	Switch, On/Off, 12V (Legacy replacement)	11			
920130K	Rocker Switch, On/Off, 12/24V	11			
949900	PFC Installation and User Guide	22			
953420K	Element, Air Filter	2			
958829	T-II Timer Installation & Operating Instructions.	22			
961125K	Kit, Installation, Timer.....	20			
972726K	Coolant Pump Drive Cup, c/w set screw.....	8			
977621K	Decal, Proheat	14			
978888K	Kit, Fuse, Battery 15A.....	10			
PH0350	Basic Heater	B-1			
PH0360	Standard Heater Kit – No Enclosure.....	B-1			
PH0370	Standard Heater Kit – With Enclosure	B-1			
PH0380	School Bus Heater Kit – With Install Kit, Enclosure and Impact Switch	B-1			
PK0001-1	Kit, T-II Timer, 7-Day Digital c/w Installation Kit.	20			
PK0152	Kit, Mounting, Side Frame.....	17			
PK0383	School Bus Heater Kit – With Extended Harness Install Kit (50’).....	B-1			
PK3000	Kit, Proheat Function Controller (PFC), CAN bus.....	19			
PK3001	KIT, PROHEAT Thermostat, CAN bus	19			
PK3002	Kit, Enclosure, Plain.....	14			
PK3004	Kit, Bunk Heater, 24V	21			
PK3005	Kit, Mounting, Universal.....	18			
PK3006	Kit, Mounting, Cross Frame.....	17			
PK3007	KIT, Snorkel, 5’.....	16			
PK3008	KIT, Extended Exhaust, 5’	15			
PK3009	Kit, Exhaust, Spark Arrestor	15			

Note: *This page left blank intentionally.*

Note: *This page left blank intentionally.*



SeaStar Solutions

3831 No. 6 Road
Richmond, B.C.
Canada V6V 1P6

Tel: 604-270-6899
Fax: 604-270-7172

www.proheat.com



PID# SL9212 REV. D



Designed and Manufactured
in North America



ISO 9001

© 2017 Marine Canada Acquisition Inc.
DBA SEASTAR SOLUTIONS

Proheat is a registered trademark of
Marine Canada Acquisition Inc. and its
subsidiary companies.

Printed in Canada 06/19