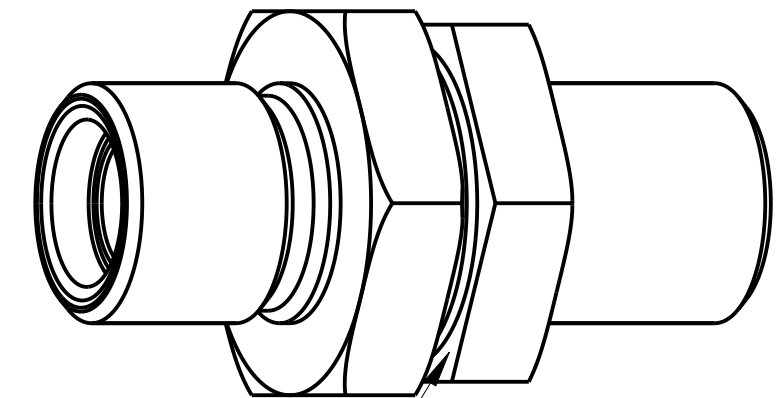
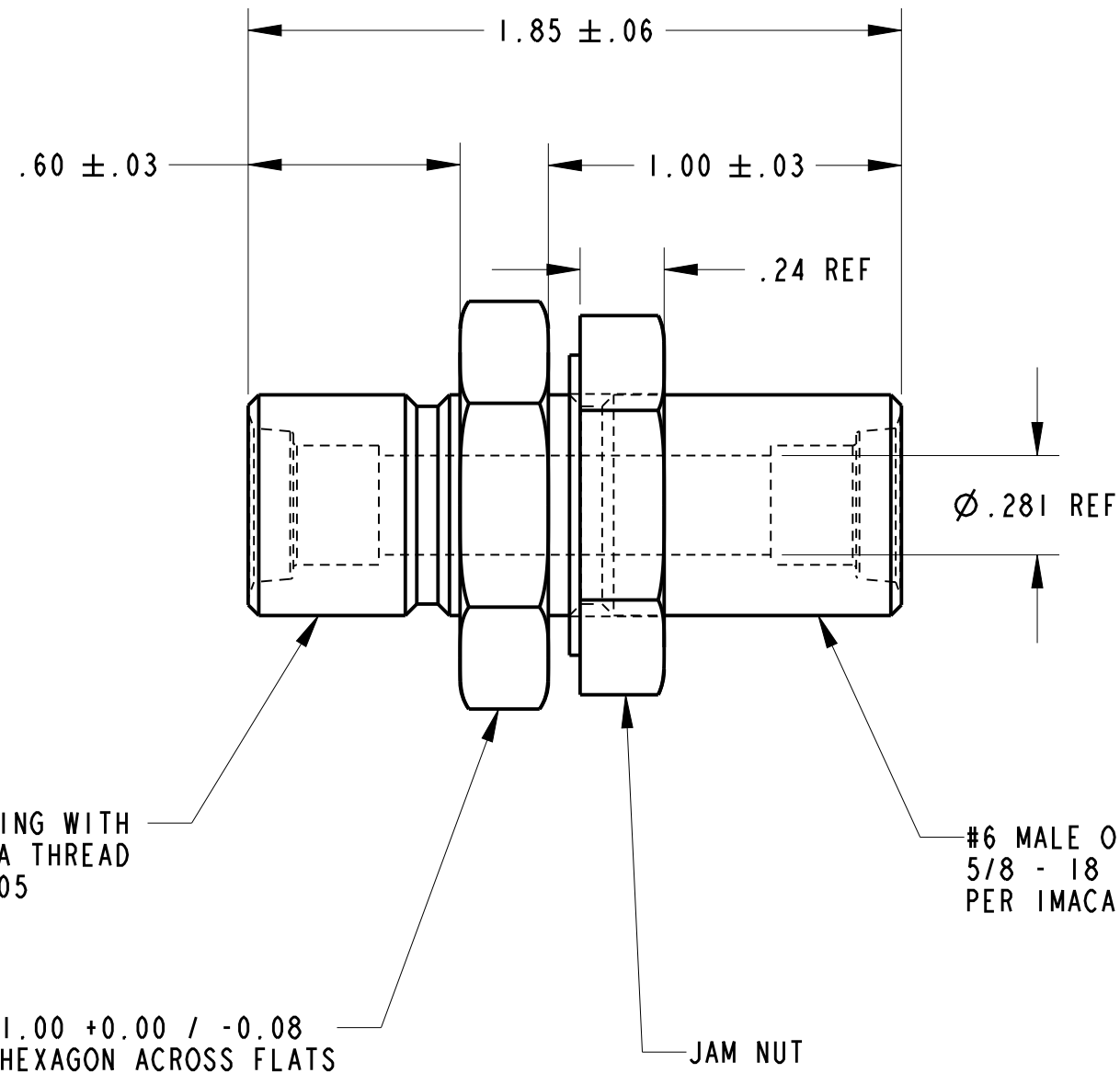


LTR	DATE MM\DD\YY	BY	CHK'D	PROVE OUT	PROD APPR	REVISION
B	9-18-12	RRK	ALO	--	TLO	REDRAWN IN PRO-E, SEE TIFF FILES FOR PREVIOUS REVS; REVISED FLAG NOTE 1. ZINC III CLEAR WAS ZINC 2 YELLOW CHROMATE; (ER-MIN4741; EC-PUR1684)
C	8-13-13	ALO	RRK	--	TLO	ADDED GEN NOTES 3 AND 4, +0.00 / -0.08 WAS +0.0051 / -0.038. (ER-MIN5209; EC-PUR2148)



ELASTOMETRIC FACE SEAL

GENERAL VIEW

- (B) ∇ 12L14 COLD ROLLED STEEL ZINC III CLEAR
- (C) 4) FITTING TO BE FREE FROM DEFECTS, DAMAGE AND CONTAMINATES PER ES-162
- (C) 3) ALL INTERIOR AND MATING SURFACES MUST BE A MINIMUM OF \checkmark ¹²⁸
 - 2) FITTING TO BE CAPPED AT BOTH ENDS
 - 1) PENN TEX INDUSTRIES PART NUMBER PMC 1781

NOTE:

ITEM	PART NO.	DESCRIPTION	MAT'L	FINISH
-0				
DWN	A. WHITFORD 9-28-00	#6 BULKHEAD FTG MULTI-USE		
CKD	RICH O. 10-3-00			
SCALE: 2.00				
RED DOT CORPORATION 495 Andover Park East Seattle, WA 98188		THIS PRINT IS PROPRIETARY INFORMATION LOANED SUBJECT TO RETURN UPON DEMAND AND IS NOT TO BE USED DIRECTLY OR INDIRECTLY IN ANY WAY DETRIMENTAL TO RED DOT CORPORATION		
		NEXT ASSY MULTI-USE	DWG. NUMBER RD-5-8772	SIZE B
				SHEET 1 of 1