

Regulatory Compliance

Complying with the OSHA Silica Rule

29 CFR Parts 1910, 1915, and 1926

Table 1: Specified Exposure Control Methods

"Start with an enclosed cab that can hold pressure..."

1

FRESH AIR: RESPA-CF2

Powered Precleaner/High-Efficiency Filter/Pressurizer

"...is under positive pressure maintained through continuous delivery of fresh air (MERV 16 filtration or better)"

2

MONITOR: Pressure & CO₂ Monitor

"...continuous indicator of cab performance"



3

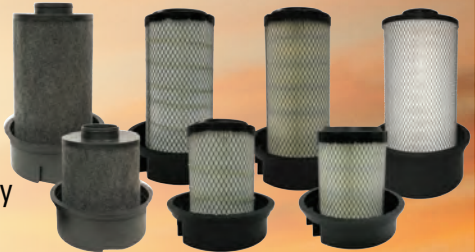
RECIRCULATED AIR: RESPA-CFX2 or RESPA-FFX2

Dust Removal via High-Efficiency MERV 16 Filtration

"...is maintained as free as practicable from settled dust"

RadialSHIELD[®] HIGH-EFFICIENCY FILTRATION OPTIONS

- HEPA
- Odor/HEPA
- Gas/HEPA
- High-Efficiency MERV 16



SY-KLONE[®]
INTERNATIONAL

www.sy-klone.com • 800-351-8265 • sales@sy-klone.com

RESPA[®] Cab Air Quality System

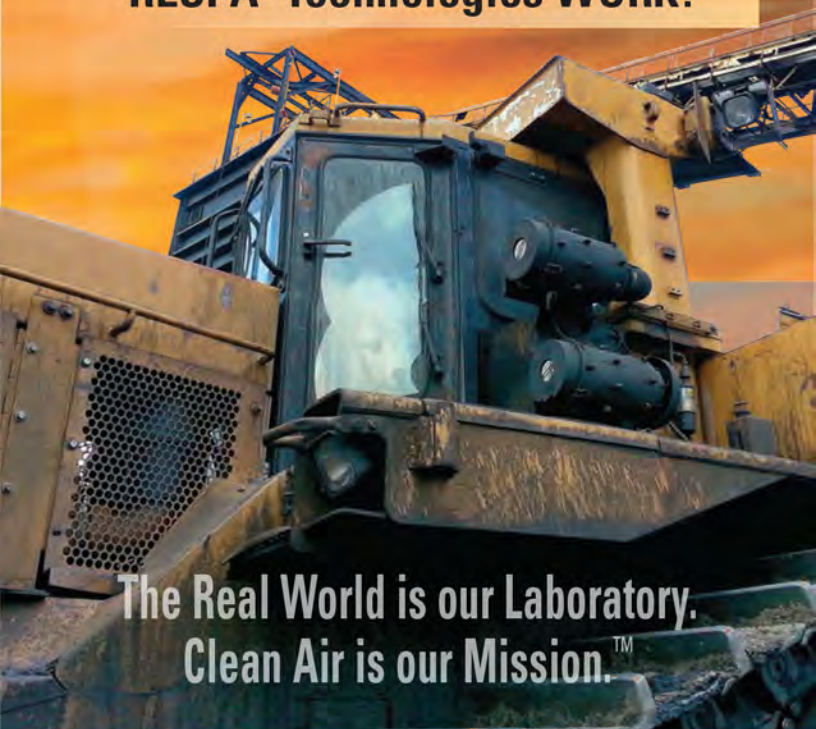
Scientifically Proven & Field Tested

RESPA[®] technology has been the subject of more research studies on cab air quality and is the most recommended system in the world today.

RESPA[®] is effective against:

- Asbestos
- Beryllium
- Coal Dust
- Diesel Particulate Matter (DPM)
- Respirable Crystalline Silica (RCS)
- And more

The facts speak for themselves:
RESPA[®] Technologies WORK!



The Real World is our Laboratory.
Clean Air is our Mission.[™]

SY-KLONE[®]
INTERNATIONAL

www.sy-klone.com • 800-351-8265 • sales@sy-klone.com